

INDICATIONS FOR TESTING^a

Testing for APS is appropriate in individuals who have an increased likelihood for the disorder, including those with:

- Arterial thrombosis, unprovoked venous thrombosis, or evidence of brain ischemia before 50 yrs of age
- Unexplained recurrent thrombosis
- Thrombosis at an unusual site
- Extensive microvascular thrombi
- Pregnancy loss or complications
- A diagnosis of SLE

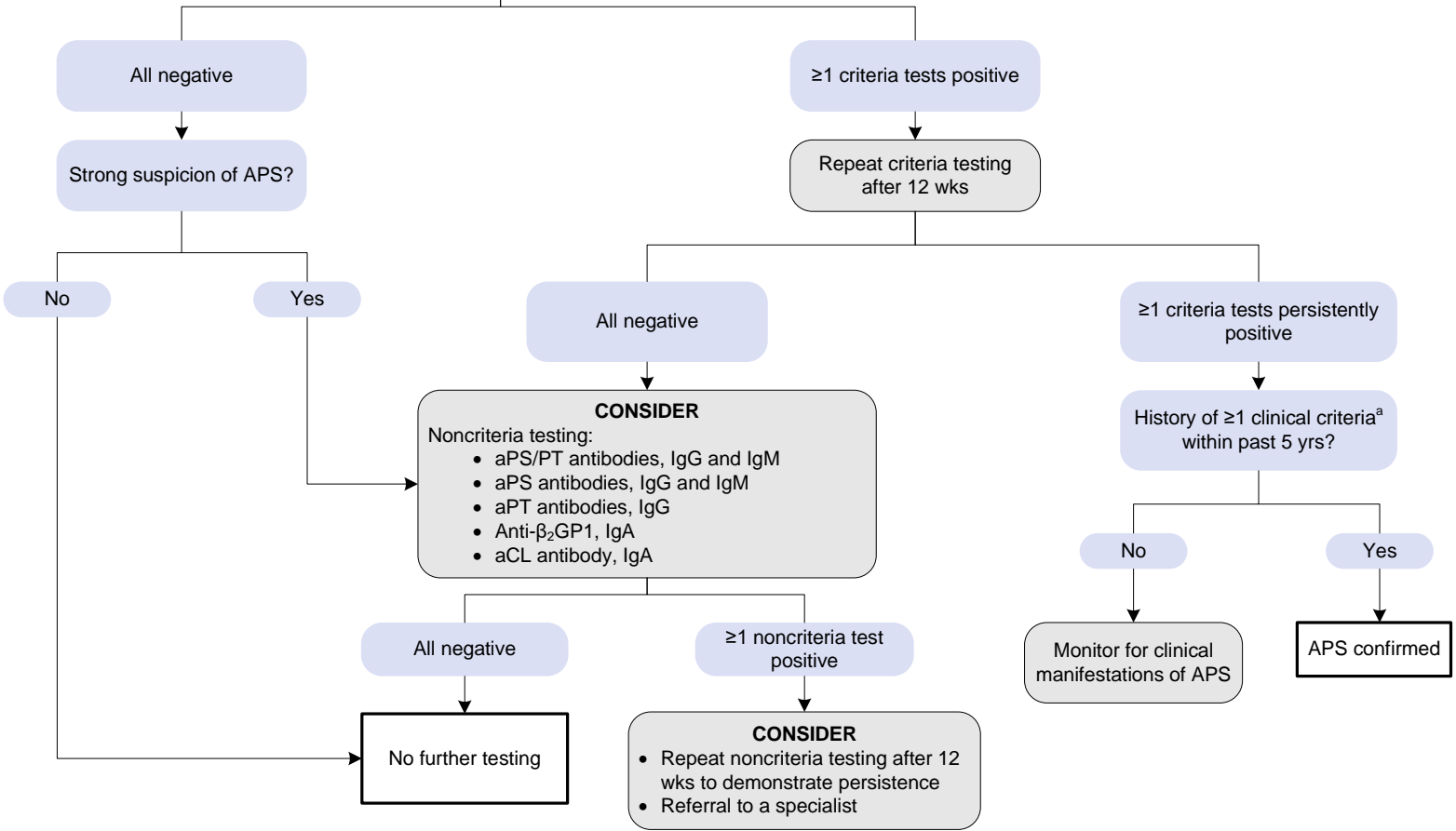
Abbreviations

aCL	Anticardiolipin
Anti-β ₂ GP1	Anti-beta-2 glycoprotein 1
APS	Antiphospholipid syndrome
aPS	Antiphosphatidylserine
aPS/PT	Antiphosphatidylserine/prothrombin complex
aPT	Antiprothrombin
aPTT	Activated partial thromboplastin time
dRVVT	Dilute Russell viper venom time
IgA	Immunoglobulin A
LA	Lupus anticoagulant
SLE	Systemic lupus erythematosus

ORDER

Criteria testing:

- 2 LA reflex tests^{bc}
- aCL antibodies, IgG and IgM
- Anti-β₂GP1 antibodies, IgG and IgM



^aFor specific clinical criteria in APS classification, refer to the ARUP Consult [Antiphospholipid Syndrome - APS](#) topic.

^bLA testing should include at least 2 different phospholipid-dependent clot-based assays (eg, aPTT and dRVVT) performed in parallel. Reflex patterns should include screening, mixing, and confirmation steps. Assays may be available individually or as part of a panel.

^cFalse-negative and/or false-positive results can occur due to anticoagulant therapy, pregnancy, acute inflammation, etc. Refer to the ARUP Consult [Antiphospholipid Syndrome - APS](#) topic for additional information on testing strategy.

References

- Miyakis S, Lockshin MD, Atsumi T, et al. [International consensus statement on an update of the classification criteria for definite antiphospholipid syndrome \(APS\)](#). *J Thromb Haemost*. 2006;4(2):295-306.
- Committee on Practice Bulletins—Obstetrics, American College of Obstetricians and Gynecologists. [Practice bulletin No. 132: antiphospholipid syndrome](#). *Obstet Gynecol*. 2012;120(6):1514-1521.
- Sammaritano LR, Bermas BL, Chakravarty EE, et al. [2020 American College of Rheumatology guideline for the management of reproductive health in rheumatic and musculoskeletal diseases](#). *Arthritis Rheumatol*. 2020;72(4):529-556.
- Devreese KMJ, de Groot PG, de Laat B, et al. [Guidance from the Scientific and Standardization Committee for lupus anticoagulant/antiphospholipid antibodies of the International Society on Thrombosis and Haemostasis: update of the guidelines for lupus anticoagulant detection and interpretation](#). *J Thromb Haemost*. 2020;18(11):2828-2839.
- Vandevelde A, Devreese KMJ. [Laboratory diagnosis of antiphospholipid syndrome: insights and hindrances](#). *J Clin Med*. 2022;11(8):2164.