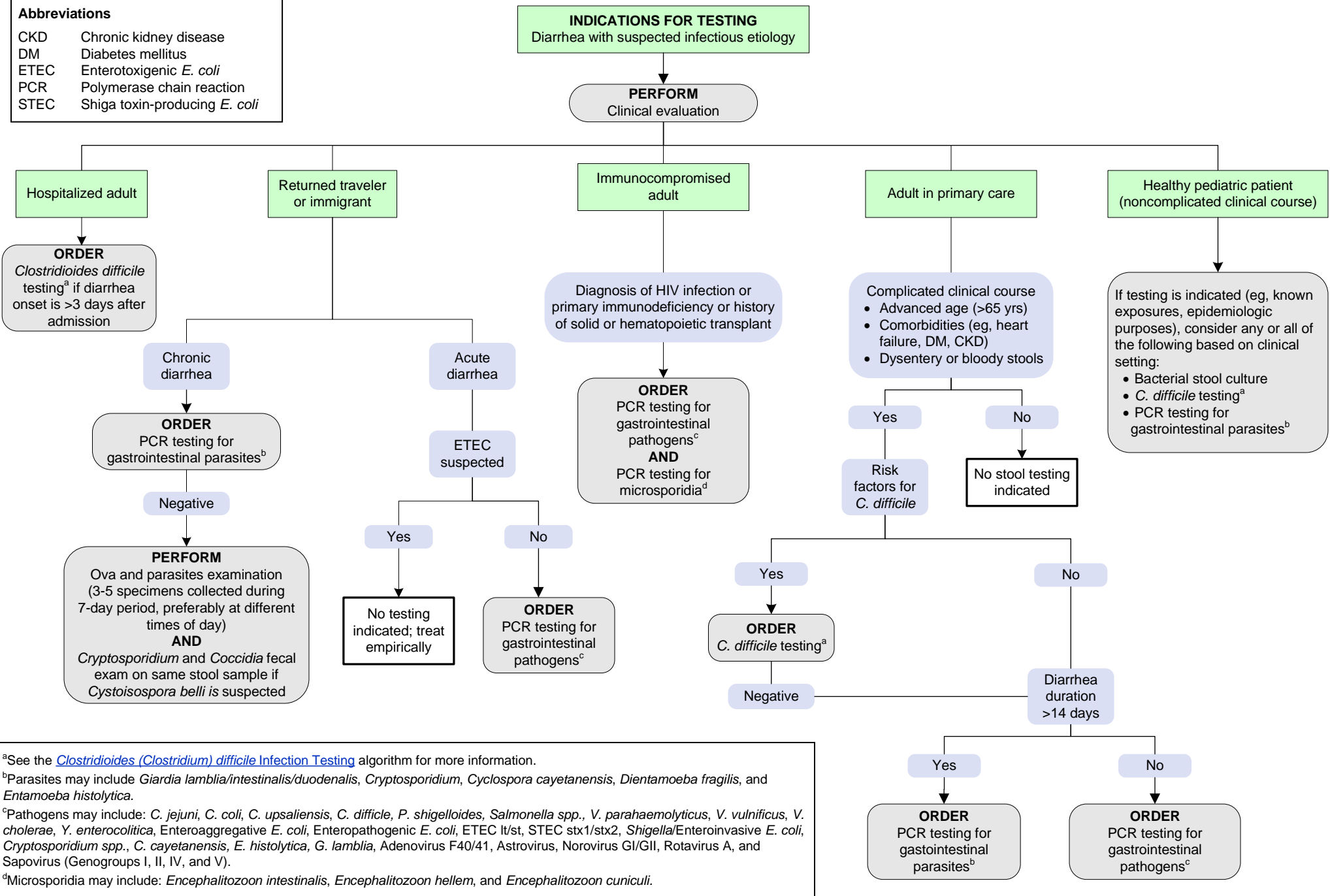


Infectious Diarrhea Testing Algorithm

[Click here for topics associated with this topic](#)

Abbreviations

CKD	Chronic kidney disease
DM	Diabetes mellitus
ETEC	Enterotoxigenic <i>E. coli</i>
PCR	Polymerase chain reaction
STEC	Shiga toxin-producing <i>E. coli</i>



^aSee the [Clostridioides \(Clostridium\) difficile Infection Testing](#) algorithm for more information.

^bParasites may include *Giardia lamblia/intestinalis/duodenalis*, *Cryptosporidium*, *Cyclospora cayetanensis*, *Dientamoeba fragilis*, and *Entamoeba histolytica*.

^cPathogens may include: *C. jejuni*, *C. coli*, *C. upsaliensis*, *C. difficile*, *P. shigelloides*, *Salmonella spp.*, *V. parahaemolyticus*, *V. vulnificus*, *V. cholerae*, *Y. enterocolitica*, Enteroaggregative *E. coli*, Enteropathogenic *E. coli*, ETEC lt/st, STEC stx1/stx2, *Shigella*/Enteroinvasive *E. coli*, *Cryptosporidium spp.*, *C. cayetanensis*, *E. histolytica*, *G. lamblia*, Adenovirus F40/41, Astrovirus, Norovirus GI/GII, Rotavirus A, and Sapovirus (Genogroups I, II, IV, and V).

^dMicrosporidia may include: *Encephalitozoon intestinalis*, *Encephalitozoon hellem*, and *Encephalitozoon cuniculi*.