

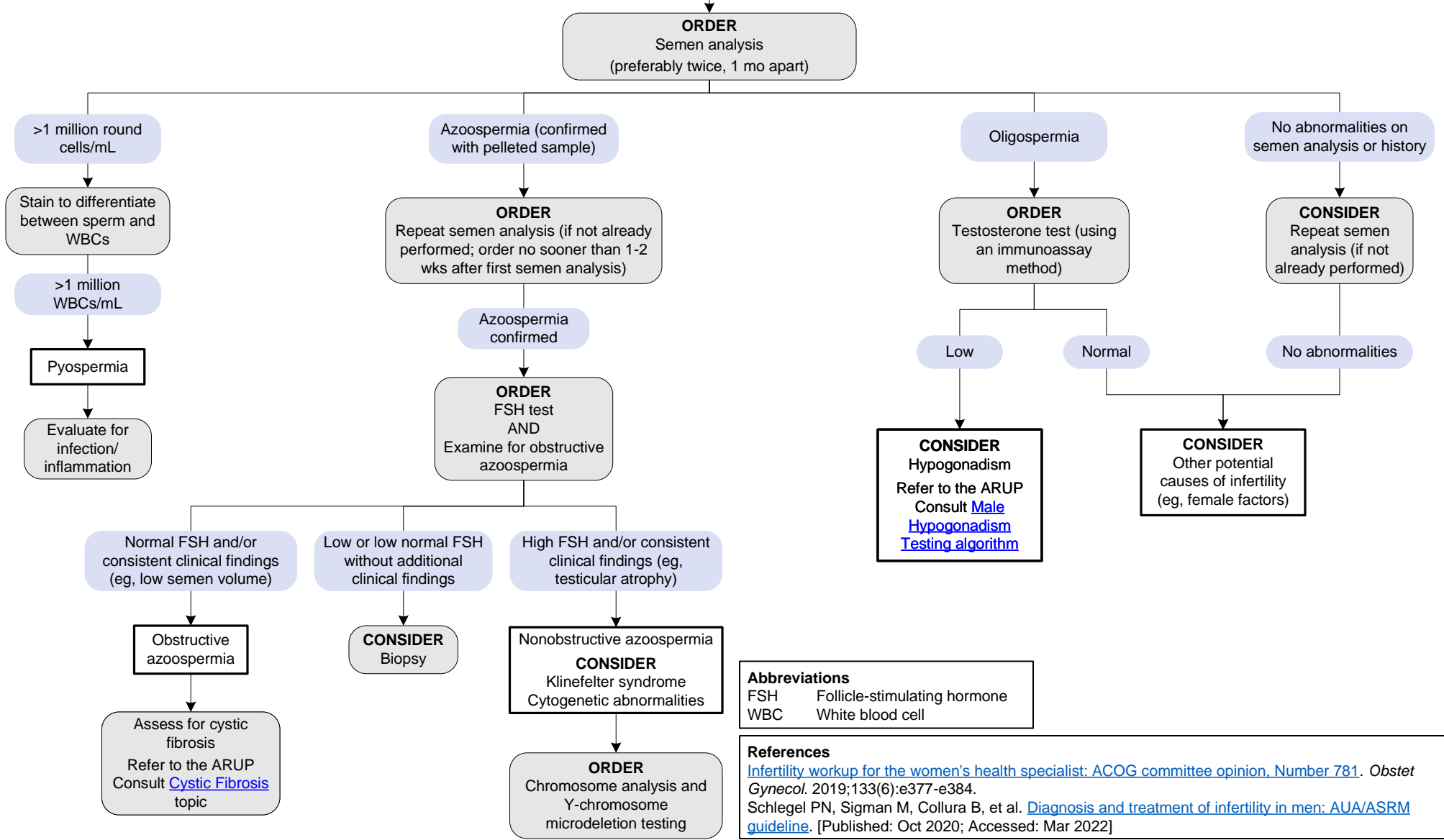
# Infertility Testing for the Male Reproductive Partner

[Click here for topics associated with this algorithm](#)

**INDICATIONS FOR TESTING**  
 Female and male reproductive partners unable to achieve pregnancy:  
 Within 12 mos if female partner <35 yrs of age  
 Within 6 mos if female partner 35-40 yrs of age  
 Within <6 mos if female partner ≥40 yrs of age

A concurrent evaluation of the female reproductive partner is recommended; refer to the [Infertility Testing for the Female Reproductive Partner Algorithm](#)

Testing should be accompanied by a detailed history and evaluation for [thyroid disease](#) and [sexually transmitted infections](#)



**Abbreviations**  
 FSH Follicle-stimulating hormone  
 WBC White blood cell

**References**  
[Infertility workup for the women's health specialist: ACOG committee opinion, Number 781. Obstet Gynecol. 2019;133\(6\):e377-e384.](#)  
[Schlegel PN, Sigman M, Collura B, et al. Diagnosis and treatment of infertility in men: AUA/ASRM guideline. \[Published: Oct 2020; Accessed: Mar 2022\]](#)