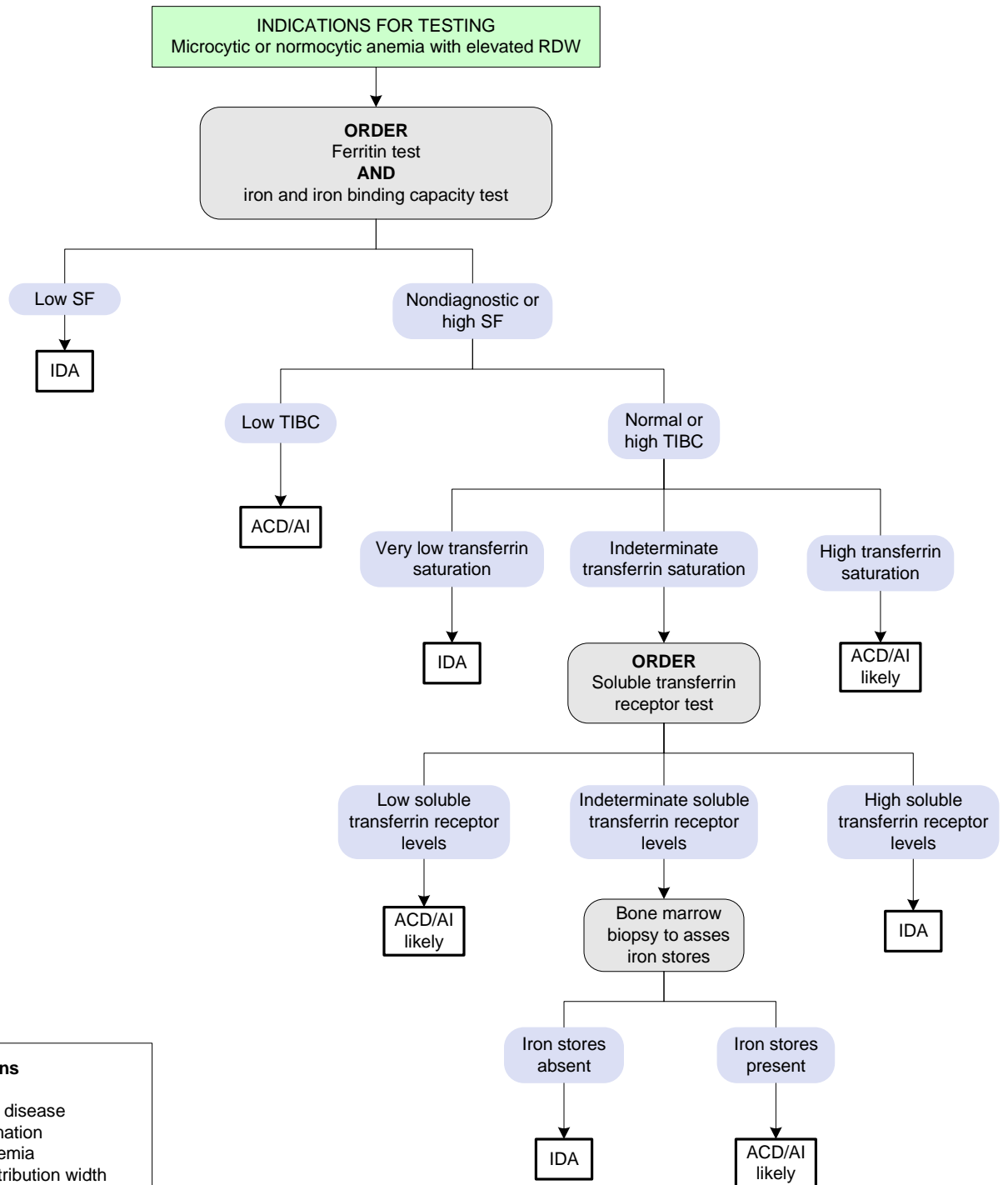


# Iron Deficiency Anemia and Anemia of Chronic Disease/ Anemia of Inflammation Testing

[Click here for topics associated with this algorithm](#)



| Abbreviations |                                   |
|---------------|-----------------------------------|
| ACD           | Anemia of chronic disease         |
| AI            | Anemia of inflammation            |
| IDA           | Iron deficiency anemia            |
| RDW           | Red blood cell distribution width |
| SF            | Serum ferritin                    |
| TIBC          | Total iron binding capacity       |