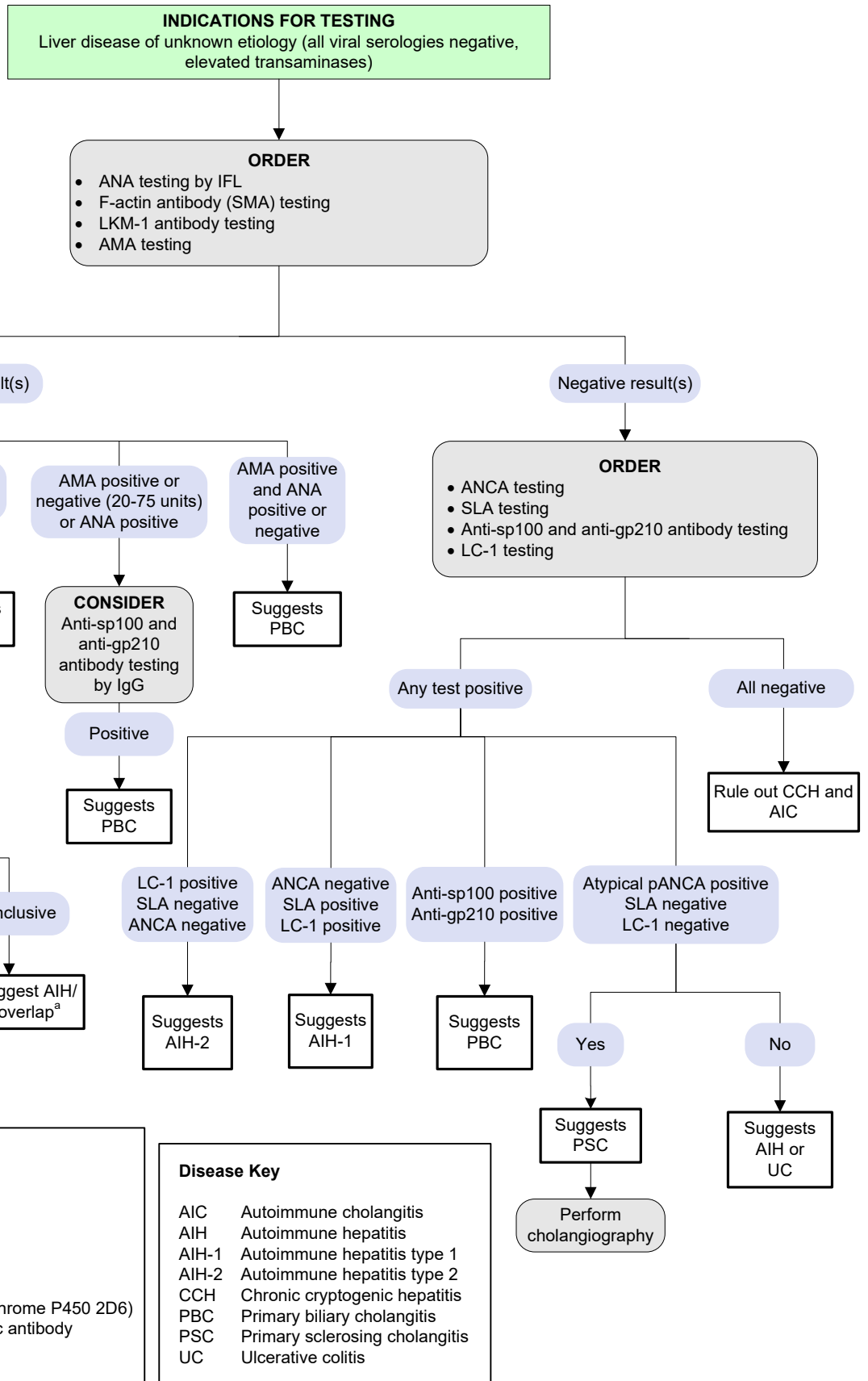


[Click here for topics associated with this algorithm](#)



Test Key	
AMA	Mitochondrial M2 antibody
ANA	Antinuclear antibody
ANCA	Antineutrophil cytoplasmic antibody
IFL	Immunofluorescence
IgG	Immunoglobulin G
LC-1	Liver cystolic antigen type 1 antibody
LKM-1	Liver-kidney microsomes type 1 (cytochrome P450 2D6)
pANCA	Perinuclear antineutrophil cytoplasmic antibody
SLA	Soluble liver antigen
SMA	Smooth muscle antibody

Disease Key	
AIC	Autoimmune cholangitis
AIH	Autoimmune hepatitis
AIH-1	Autoimmune hepatitis type 1
AIH-2	Autoimmune hepatitis type 2
CCH	Chronic cryptogenic hepatitis
PBC	Primary biliary cholangitis
PSC	Primary sclerosing cholangitis
UC	Ulcerative colitis

^aIf ANA and atypical pANCA are both positive, cholangiography and biopsy may be indicated to rule out AIH/PSC overlap syndrome; inconclusive staining patterns may also indicate need for imaging or biopsy.