

# Viral Hepatitis Screening and Diagnosis Algorithm

[Click here for topics associated with this algorithm](#)

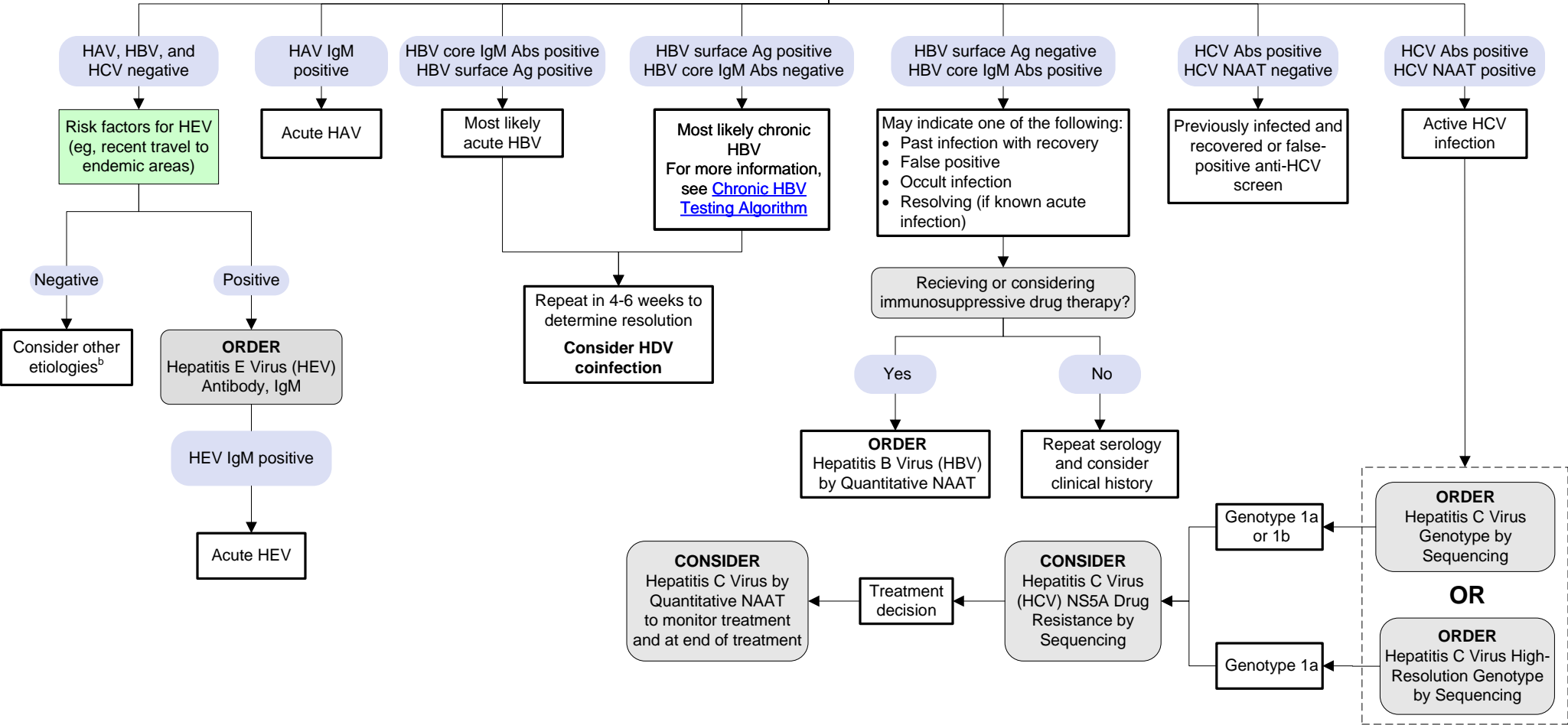
### Abbreviations

Ab	Antibody
Ag	Antigen
CIA	Chemiluminescent immunoassay
HAV	Hepatitis A virus
HBV	Hepatitis B virus
HCV	Hepatitis C virus
HDV	Hepatitis D virus
HEV	Hepatitis E virus
IgM	Immunoglobulin M
NAAT	Nucleic acid amplification test
NS5A	Nonstructural protein 5A

**INDICATIONS FOR TESTING**  
 New onset of symptoms (jaundice, fever, anorexia, dark urine)  
 OR elevated liver enzymes of unknown etiology

**ORDER<sup>a</sup>**  
**Hepatitis Panel, Acute with Reflex to HBsAg Confirmation and Reflex to HCV by Quantitative NAAT (includes the following):**

- Hepatitis A Virus Antibody, IgM
- Hepatitis B Virus Core Antibody, IgM
- Hepatitis B Virus Surface Antigen with Reflex to Confirmation
- Hepatitis C Virus Antibody by CIA with Reflex to HCV by Quantitative NAAT



<sup>a</sup>Panel testing is recommended, but in some cases it may be appropriate to perform specific testing depending on clinical situation.  
<sup>b</sup>Other etiologies may include other viruses, toxin exposure, nonalcoholic acute steatohepatitis, drug-induced hepatitis, autoimmune liver disease, bacterial infection, ischemia, parasitic infection, and hereditary diseases.