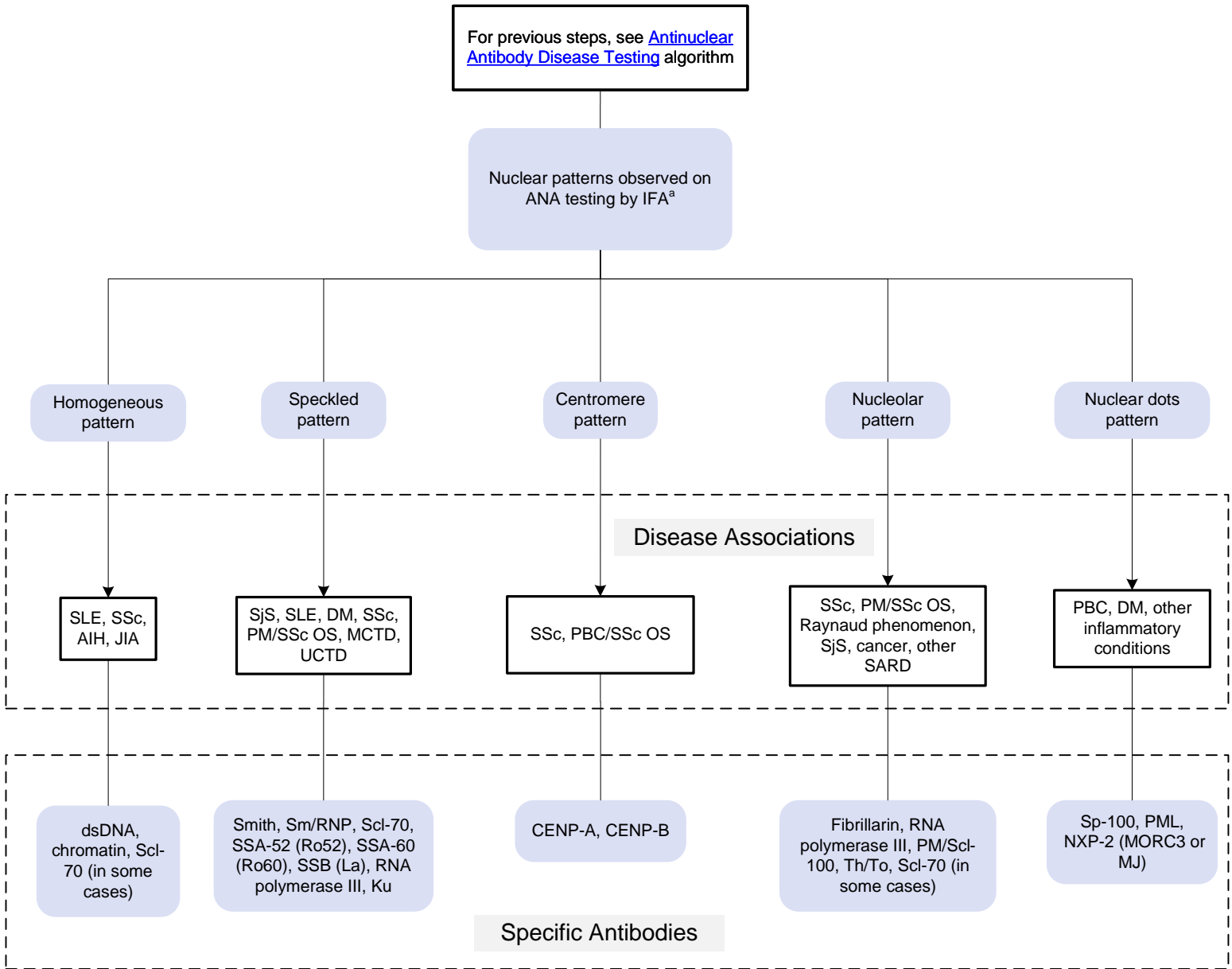


[Click here for topics associated with this algorithm](#)



Abbreviations	
ANA	Antinuclear antibody
AIH	<a href="#">Autoimmune hepatitis</a>
DM	<a href="#">Dermatomyositis</a>
IFA	Indirect fluorescent antibody (assay)
JIA	Juvenile idiopathic arthritis
MCTD	<a href="#">Mixed connective tissue disease</a>
OS	Overlap syndrome
PBC	<a href="#">Primary biliary cholangitis</a>
PM	<a href="#">Polymyositis</a>
SARD	<a href="#">Systemic autoimmune rheumatic disease</a>
SjS	<a href="#">Sjögren syndrome</a>
SLE	<a href="#">Systemic lupus erythematosus</a>
SSc	<a href="#">Systemic sclerosis</a>
UCTD	Undifferentiated connective tissue disease

<sup>a</sup>For the most up-to-date information about ANA patterns, refer to the [International Consensus on ANA Patterns website](#).