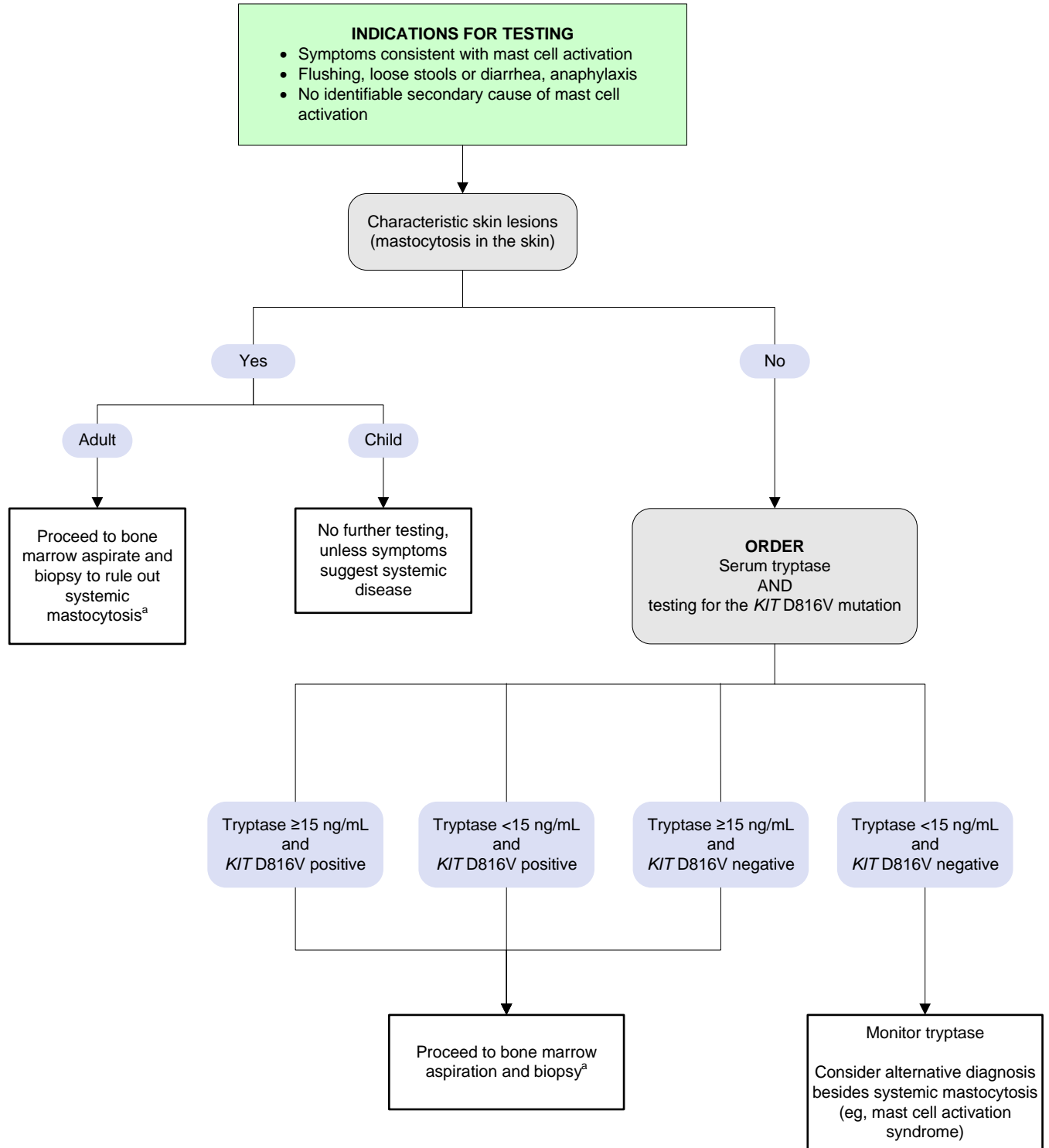


Mast Cell Disorders Testing Algorithm

[Click here for topics associated with this algorithm](#)



^aPatients may be negative for *KIT* D816V mutation and still have systemic mastocytosis; consider full *KIT* gene sequencing.

^bHigh-sensitivity assay for detection of *KIT* D816V mutation (eg, allele-specific polymerase chain reaction [PCR]) recommended.