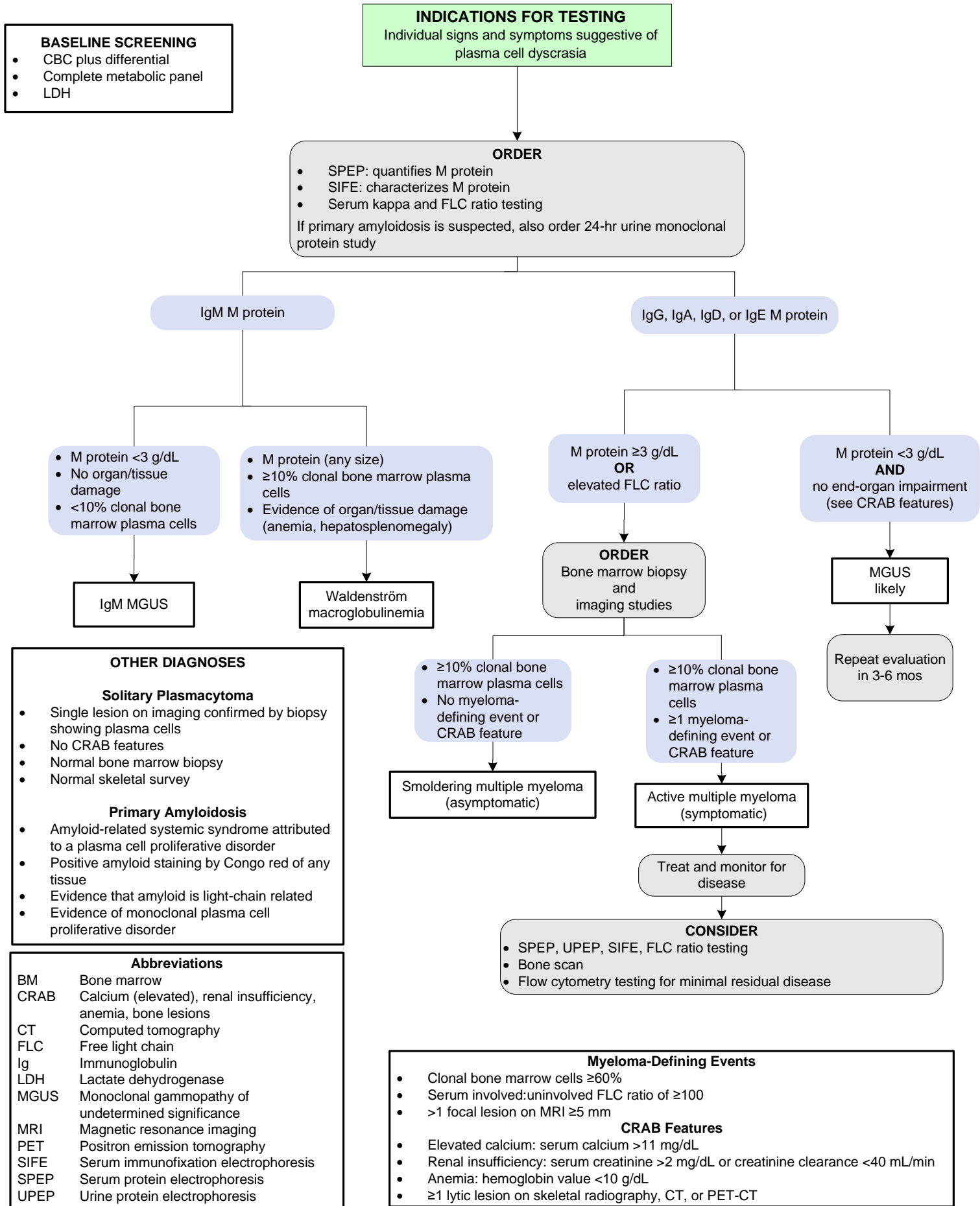


# Plasma Cell Dyscrasias

[Click here for topics associated with this algorithm](#)



### OTHER DIAGNOSES

#### Solitary Plasmacytoma

- Single lesion on imaging confirmed by biopsy showing plasma cells
- No CRAB features
- Normal bone marrow biopsy
- Normal skeletal survey

#### Primary Amyloidosis

- Amyloid-related systemic syndrome attributed to a plasma cell proliferative disorder
- Positive amyloid staining by Congo red of any tissue
- Evidence that amyloid is light-chain related
- Evidence of monoclonal plasma cell proliferative disorder

### Abbreviations

BM	Bone marrow
CRAB	Calcium (elevated), renal insufficiency, anemia, bone lesions
CT	Computed tomography
FLC	Free light chain
Ig	Immunoglobulin
LDH	Lactate dehydrogenase
MGUS	Monoclonal gammopathy of undetermined significance
MRI	Magnetic resonance imaging
PET	Positron emission tomography
SIFE	Serum immunofixation electrophoresis
SPEP	Serum protein electrophoresis
UPEP	Urine protein electrophoresis

### Myeloma-Defining Events

- Clonal bone marrow cells ≥60%
- Serum involved:uninvolved FLC ratio of ≥100
- >1 focal lesion on MRI ≥5 mm

### CRAB Features

- Elevated calcium: serum calcium >11 mg/dL
- Renal insufficiency: serum creatinine >2 mg/dL or creatinine clearance <40 mL/min
- Anemia: hemoglobin value <10 g/dL
- ≥1 lytic lesion on skeletal radiography, CT, or PET-CT