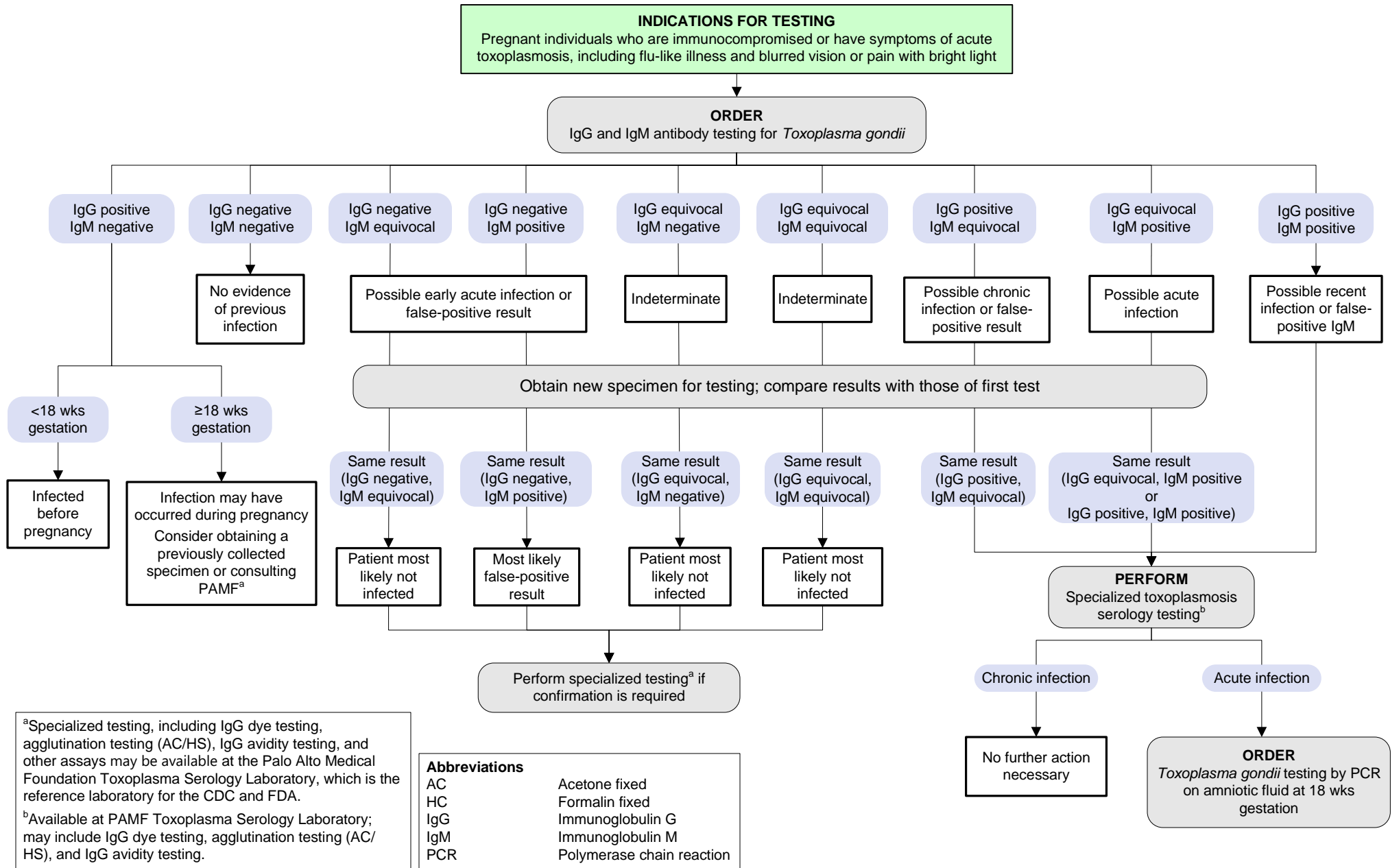


[Click here for topics associated with this algorithm](#)



^aSpecialized testing, including IgG dye testing, agglutination testing (AC/HS), IgG avidity testing, and other assays may be available at the Palo Alto Medical Foundation Toxoplasma Serology Laboratory, which is the reference laboratory for the CDC and FDA.

^bAvailable at PAMF Toxoplasma Serology Laboratory; may include IgG dye testing, agglutination testing (AC/HS), and IgG avidity testing.

Abbreviations

AC	Acetone fixed
HC	Formalin fixed
IgG	Immunoglobulin G
IgM	Immunoglobulin M
PCR	Polymerase chain reaction

References

- Montoya JG, Remington JS. Management of Toxoplasma gondii infection during pregnancy. *Clin Infect Dis.* 2008;47(4):554-566.
- U.S. Department of Health and Human Services, Centers for Disease Control and Prevention. DPDx - laboratory identification of parasites of public health concern: toxoplasmosis [Last updated: Nov 2020; Accessed: Jun 2021]