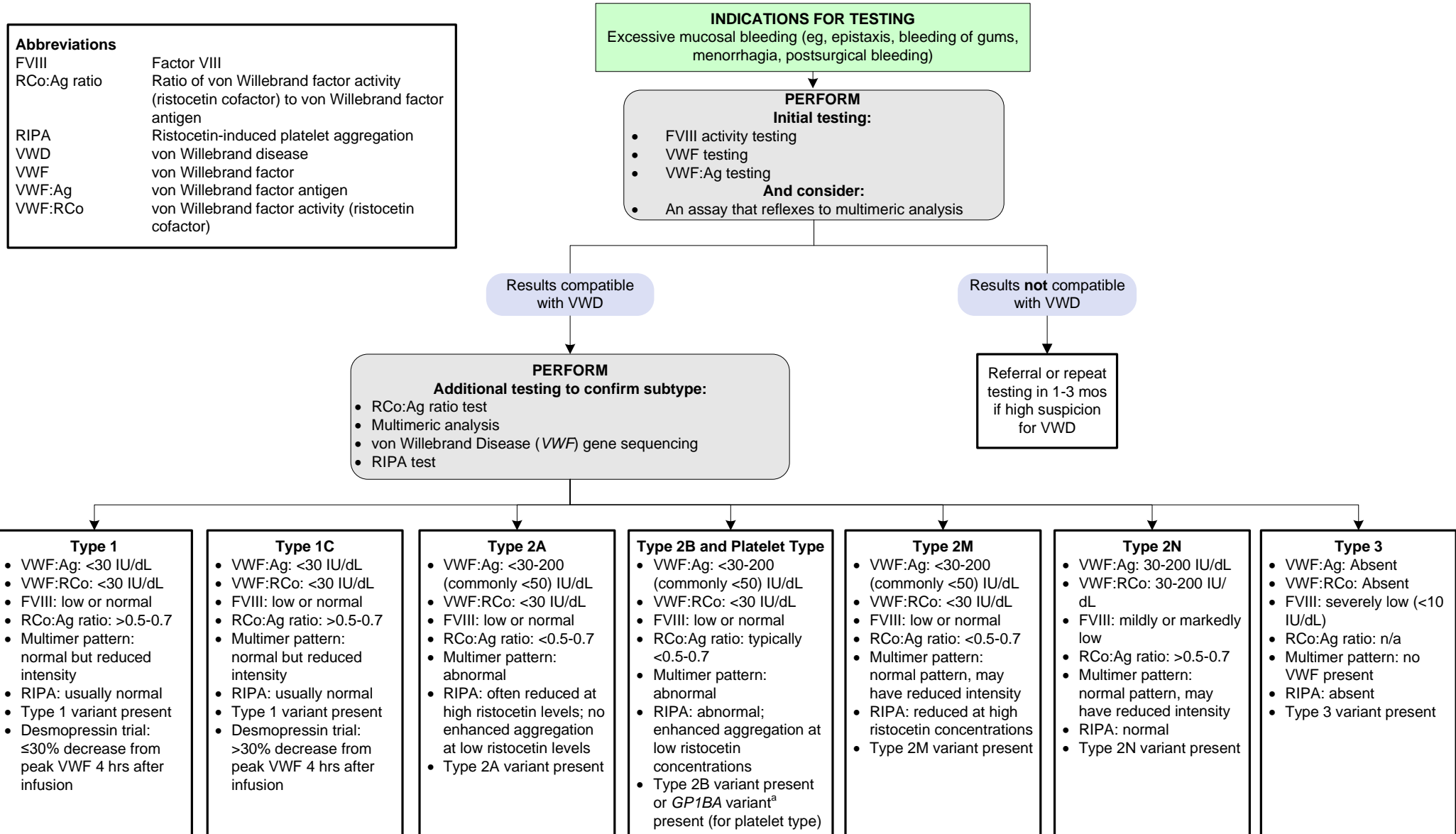


Von Willebrand Disease Testing

[Click here for topics associated with this algorithm](#)



^aGenetic testing for the *GP1BA* variant is not available at ARUP Laboratories.

References

- Favaloro EJ, Bodó I, Israels SJ, et al. [von Willebrand disease and platelet disorders](#). *Haemophilia*. 2014;20 Suppl 4:59-64.
- James PD, Connell NT, Ameer B, et al. [ASH ISTH NHF WFH 2021 guidelines on the diagnosis of von Willebrand disease](#). *Blood Adv*. 2021;5(1):280-300.
- Nichols WL, Hultin MB, James AH, et al. [von Willebrand disease \(VWD\): evidence-based diagnosis and management guidelines, the National Heart, Lung, and Blood Institute \(NHLBI\) Expert Panel report \(USA\)](#). *Haemophilia*. 2008;14(2):171-232.
- American Society of Hematology. Quick Reference: 2012 clinical practice guideline on the evaluation and management of von Willebrand disease (VWD). [Revised: 2012; Accessed: Feb 2021]