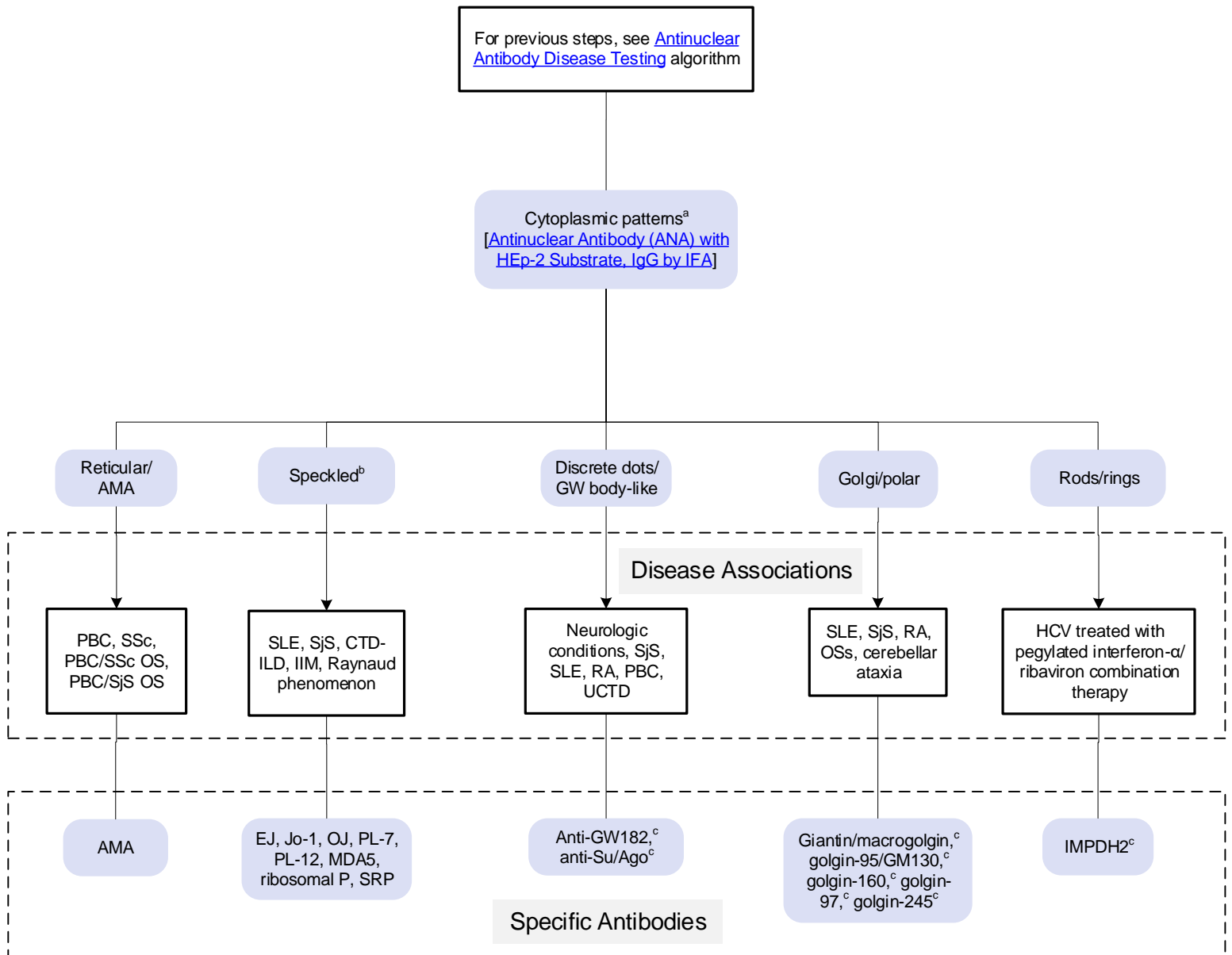


[Click here for topics associated with this algorithm](#)



Abbreviations

AMA	Antimitochondrial antibodies	OS	Overlap syndrome
ANA	Antinuclear antibody	PBC	Primary biliary cholangitis
CTD-ILD	Connective tissue disease-associated interstitial lung disease	RA	Rheumatoid arthritis
HCV	Hepatitis C virus	SjS	Sjögren syndrome
IFA	Immunofluorescent assay	SLE	Systemic lupus erythematosus
IIM	Idiopathic inflammatory myopathy	SSc	Systemic sclerosis
		UCTD	Undifferentiated connective tissue disease

^aOnly includes patterns reported by ARUP Laboratories; specific patterns may be associated with diverse clinical disease and autoantibody types. For the most up-to-date information about ANA patterns, refer to the [International Consensus on ANA Patterns website](#).

^bIncludes fine speckled and dense fine speckled cytoplasmic patterns.

^cNo confirmatory tests are available at ARUP Laboratories.