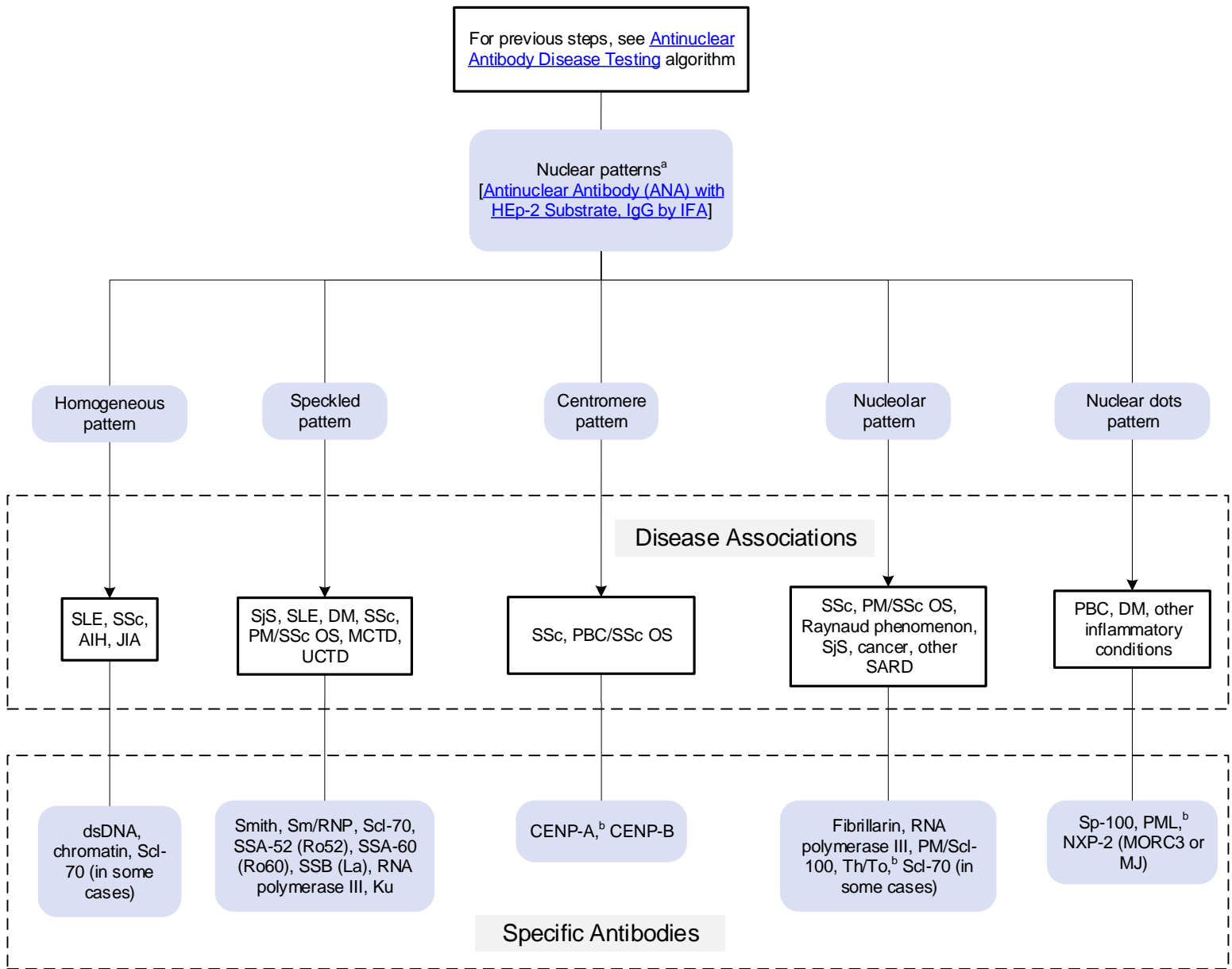


[Click here for topics associated with this algorithm](#)



Abbreviations	
ANA	Antinuclear antibody
AIH	Autoimmune hepatitis
DM	Dermatomyositis
JIA	Juvenile idiopathic arthritis
MCTD	Mixed connective tissue disease
OS	Overlap syndrome
PBC	Primary biliary cholangitis
PM	Polymyositis
SARD	Systemic autoimmune rheumatic disease
SjS	Sjögren syndrome
SLE	Systemic lupus erythematosus
SSc	Systemic sclerosis
UCTD	Undifferentiated connective tissue disease

^aOnly includes patterns reported by ARUP Laboratories; specific patterns may be associated with diverse clinical disease and autoantibody types. For the most up-to-date information about ANA patterns, refer to the [International Consensus on ANA Patterns website](#).
^bTesting not available at ARUP Laboratories.