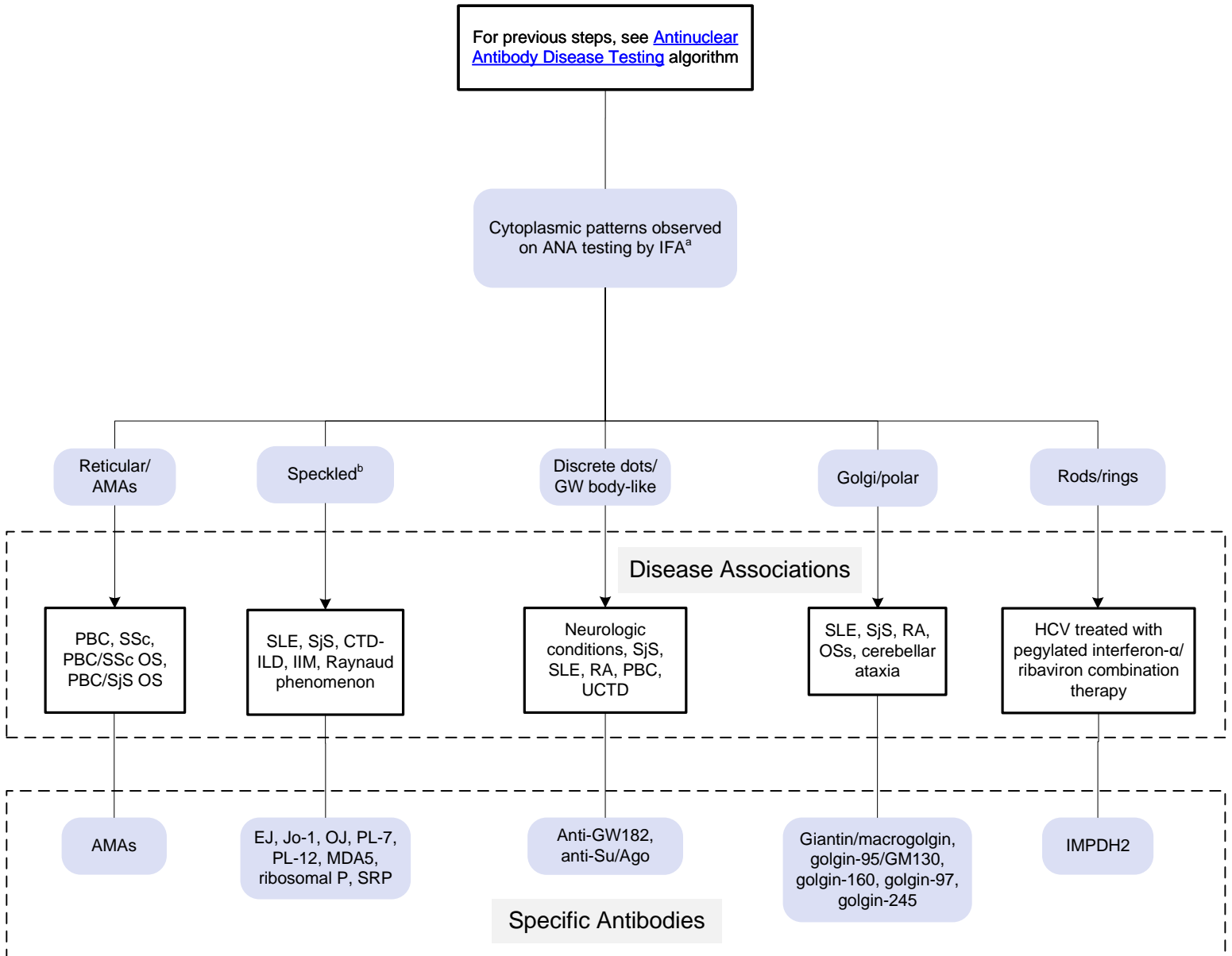


[Click here for topics associated with this algorithm](#)



Abbreviations		
AMA	Antimitochondrial antibody	OS
ANA	Antinuclear antibody	PBC
CTD-ILD	Connective tissue disease-associated interstitial lung disease	RA
HCV	Hepatitis C virus	SjS
IFA	Indirect fluorescent antibody (assay)	SLE
IIM	Idiopathic inflammatory myopathy	SRP
		SSc
		UCTD
		Overlap syndrome
		Primary biliary cholangitis
		Rheumatoid arthritis
		Sjögren syndrome
		Systemic lupus erythematosus
		Signal recognition particle
		Systemic sclerosis
		Undifferentiated connective tissue disease

^aFor the most up-to-date information about ANA patterns, refer to the [International Consensus on ANA Patterns website](#).
^bIncludes fine speckled and dense fine speckled cytoplasmic patterns.