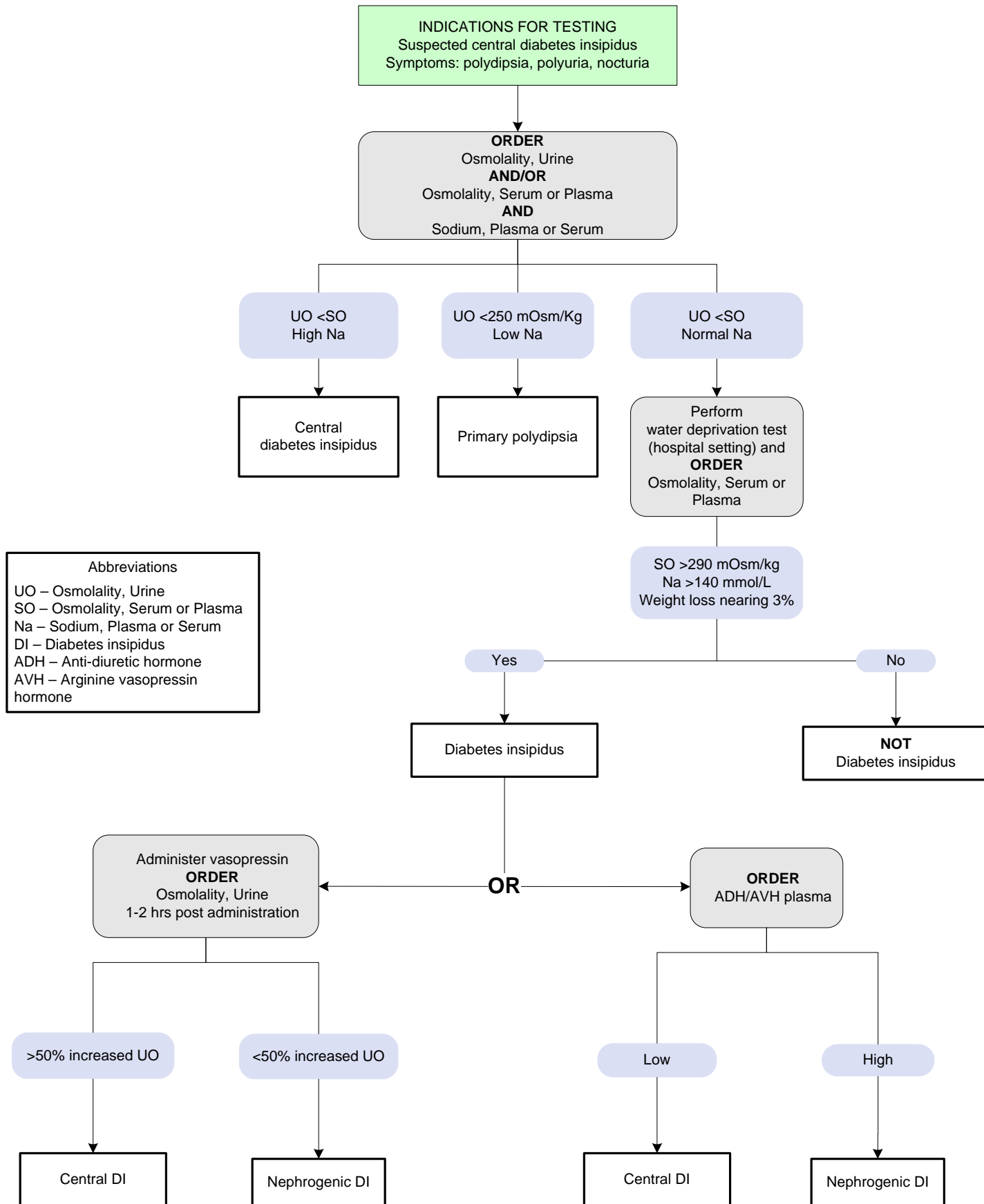


Central Diabetes Insipidus (Posterior Pituitary) Testing

[Click here for topics associated with this algorithm](#)



Abbreviations
 UO – Osmolality, Urine
 SO – Osmolality, Serum or Plasma
 Na – Sodium, Plasma or Serum
 DI – Diabetes insipidus
 ADH – Anti-diuretic hormone
 AVH – Arginine vasopressin hormone