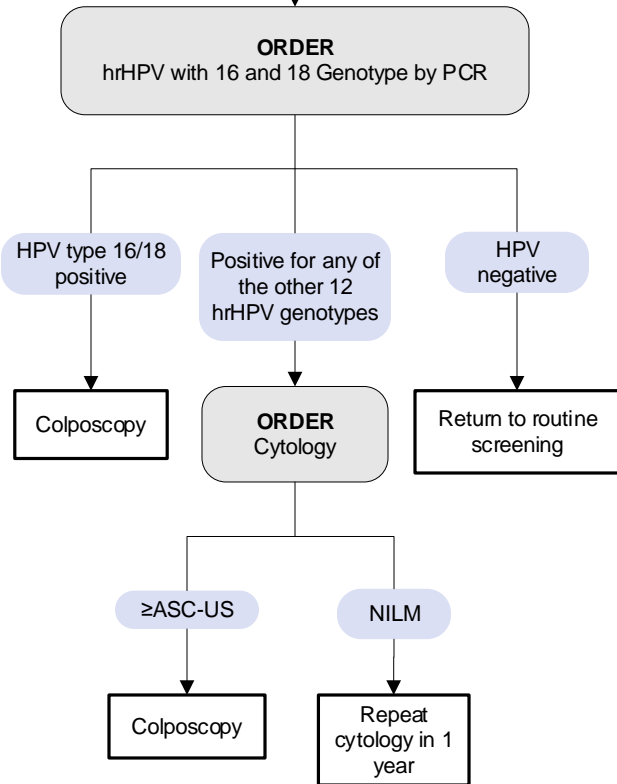
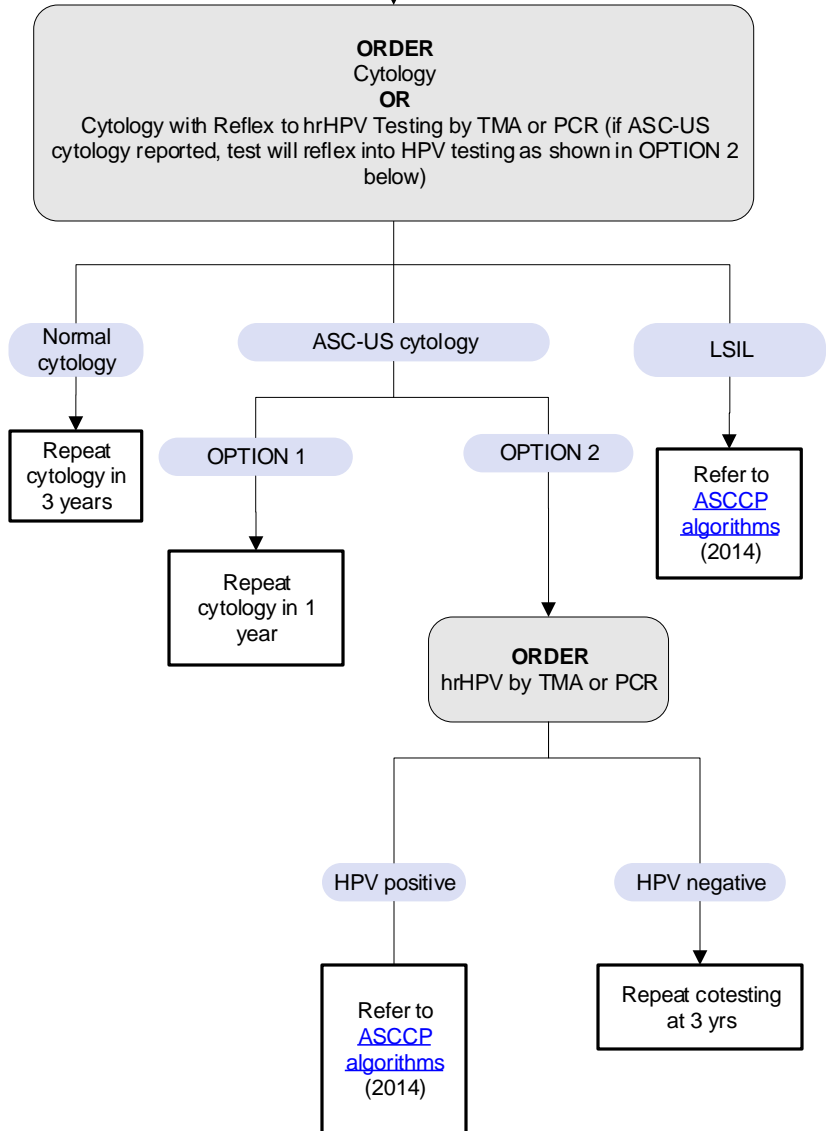


Cervical Cancer Screening and Management Recommendations for Women 25 to <30 Years of Age

OPTION 1: PRIMARY HPV TESTING FOR CERVICAL CANCER SCREENING (Note: Client should retain aliquot for cytology testing in case of hrHPV positivity)



OPTION 2: CYTOLOGY



Definitions

- hrHPV – high-risk HPV
- ASC-US – atypical squamous cells of undetermined significance
- NILM – negative for intraepithelial lesion or malignancy
- LSIL – low-grade squamous intraepithelial lesion

Notes

- Posthysterectomy and no history of CIN2+ = no screening recommended

References:

- [ASCCP algorithms](#)
- Huh WK, Ault KA, Chelmow D, Davey DD, Goulart RA, Garcia FA, Kinney WK, Massad LS, Mayeaux EJ, Saslow D, Schiffman M, Wentzensen N, Lawson HW, Einstein MH. Use of primary high-risk human papillomavirus testing for cervical cancer screening: Interim clinical guidance. *Gynecol Oncol.* 2015; 136(2):178-82. PubMed
- Massad S, Einstein MH, Huh WK, Katki HA, Kinney WK, Schiffman M, Solomon D, Wentzensen N, Lawson HW, 2012 ASCCP Consensus Guidelines Conference. 2012 updated consensus guidelines for the management of abnormal cervical cancer screening tests and cancer precursors. *Obstet Gynecol.* 2013; 121(4): 829-46. PubMed