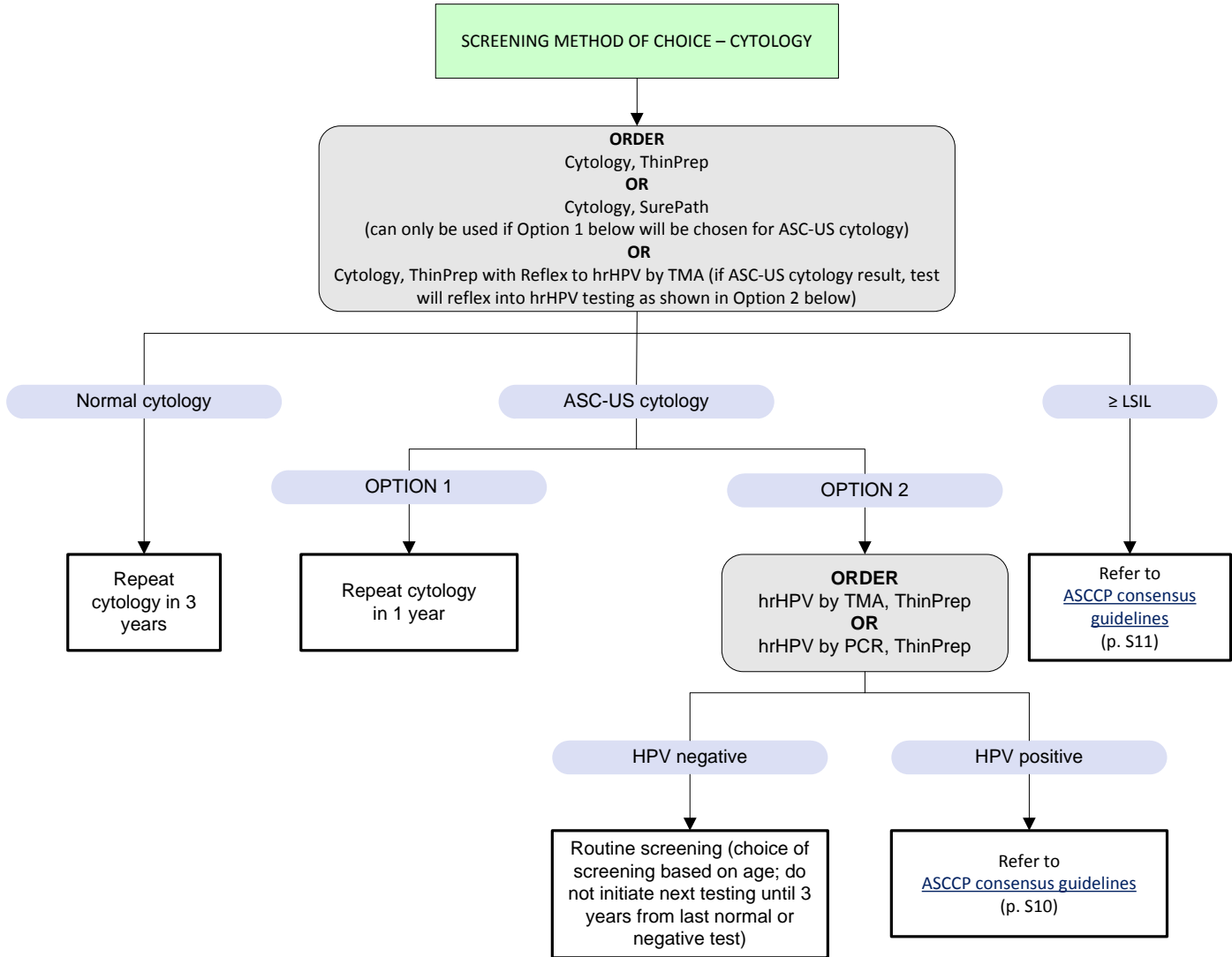


Human Papillomavirus Screening and Management Recommendations Women 21 – <25 Years of Age



Definitions

- hrHPV – high-risk HPV
- ASC-US – atypical squamous cells of undetermined significance
- LSIL – low-grade squamous intraepithelial lesion

Notes

- No cervical cancer or HPV screening recommended for women <21 years of age
- Post-hysterectomy and no history of CIN2+ = no screening recommended

References:

Saslow D, Solomon D, Lawson HW, Killackey M, Kulasingam SL, Cain J, Garcia FA, Moriarty AT, Waxman AG, Wilbur DC, Wentzensen N, Downs LS Jr, Spitzer M, Moscicki AB, Franco EL, Stoler MH, Schiffman M, Castle PE, Myers ER. American Cancer Society, American Society for Colposcopy and Cervical Pathology, and American Society for Clinical Pathology screening guidelines for the prevention and early detection of cervical cancer. *CA Cancer J Clin.* 2012; 62 (3) :147-172.

Moyer VA. Screening for cervical cancer: U.S. Preventive Services Task Force recommendation statement. *Ann Intern Med.* 2012; 156 (12) :880-91, W312.