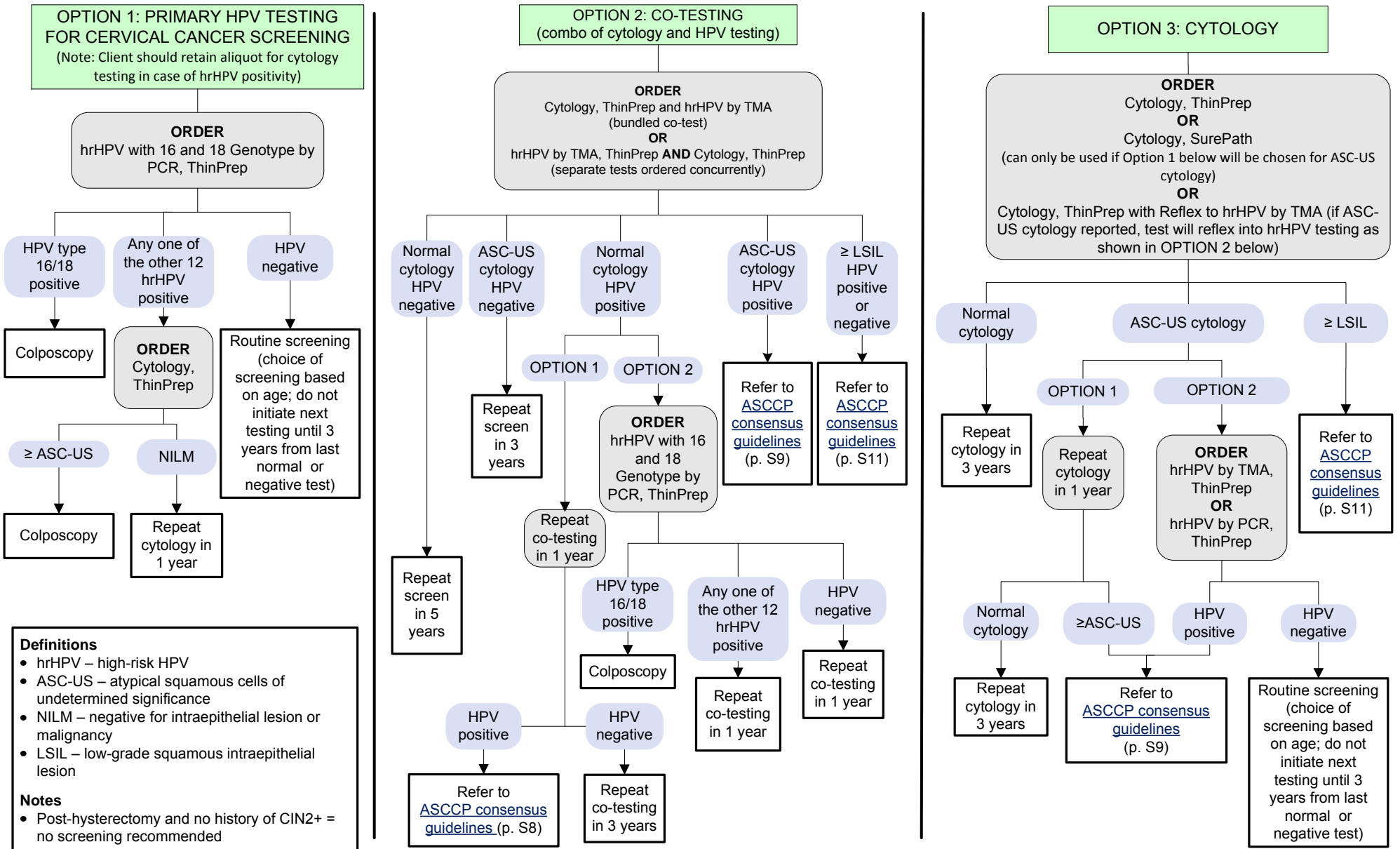


Human Papillomavirus Screening and Management Recommendations Women 30 – 65 Years of Age

[Click here for topics associated with this algorithm](#)



Definitions

- hrHPV – high-risk HPV
- ASC-US – atypical squamous cells of undetermined significance
- NILM – negative for intraepithelial lesion or malignancy
- LSIL – low-grade squamous intraepithelial lesion

Notes

- Post-hysterectomy and no history of CIN2+ = no screening recommended

References:

- Saslow D, Solomon D, Lawson HW, Killackey M, Kulasingam SL, Cain J, Garcia FA, Moriarty AT, Waxman AG, Wilbur DC, Wentzensen N, Downs LS Jr, Spitzer M, Moscicki AB, Franco EL, Stoler MH, Schiffman M, Castle PE, Myers ER. American Cancer Society, American Society for Colposcopy and Cervical Pathology, and American Society for Clinical Pathology screening guidelines for the prevention and early detection of cervical cancer. *CA Cancer J Clin.* 2012; 62 (3) :147-172.
- Huh WK, Ault KA, Chelmow D, Davey DD, Goulart RA, Garcia FA, Kinney WK, Massad LS, Mayeaux EJ, Saslow D, Schiffman M, Wentzensen N, Lawson HW, Einstein MH. Use of primary high-risk human papillomavirus testing for cervical cancer screening: Interim clinical guidance. *Gynecol Oncol.* 2015 Feb;136(2):178-82. doi:10.1016/j.ygyno.2014.12.022. Epub 2015 Jan 8.
- Moyer VA. Screening for cervical cancer: U.S. Preventive Services Task Force recommendation statement. *Ann Intern Med.* 2012; 156 (12) :880-91, W312.