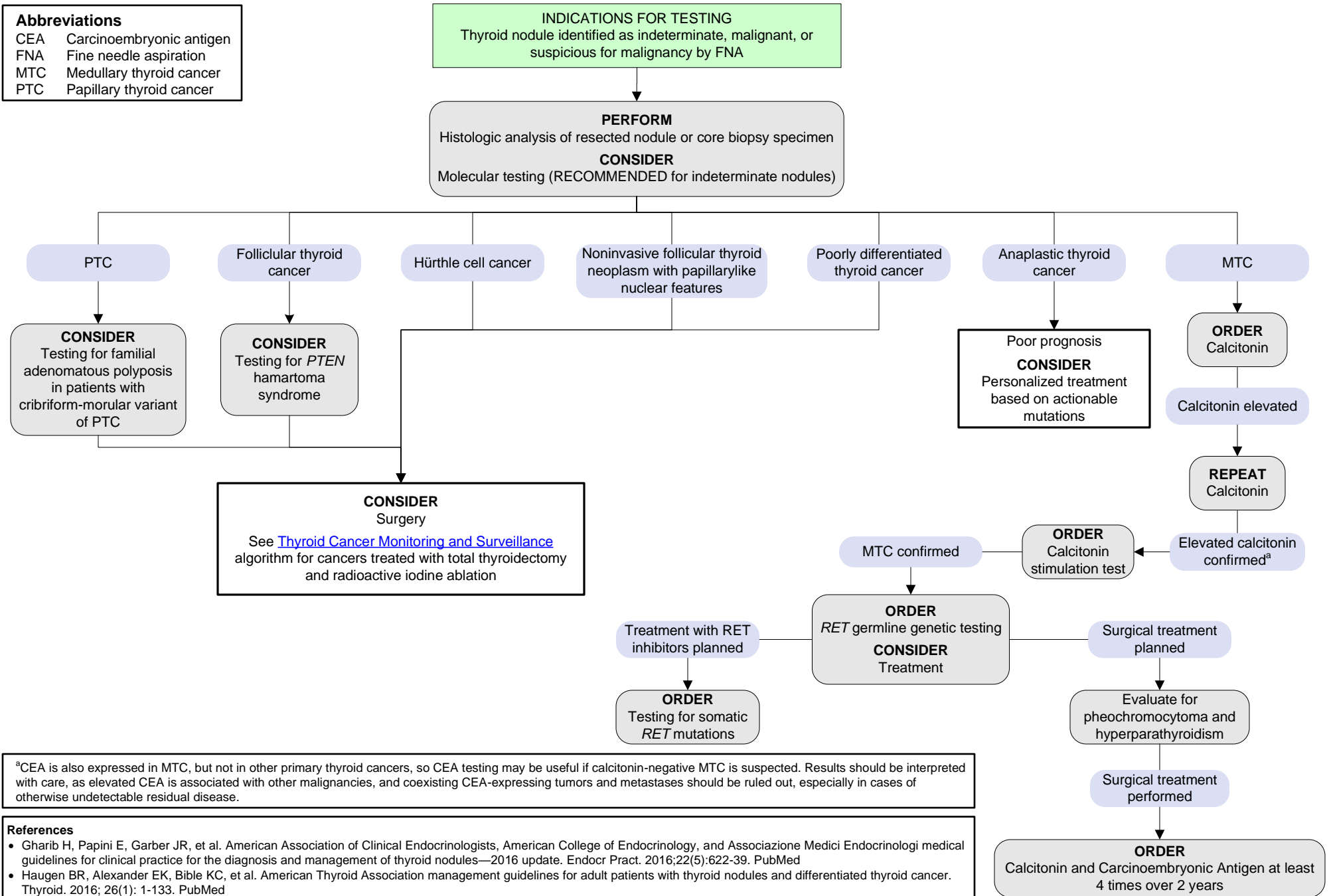


# Thyroid Cancer Testing

[Click here for topics associated with this algorithm](#)

| Abbreviations |                          |
|---------------|--------------------------|
| CEA           | Carcinoembryonic antigen |
| FNA           | Fine needle aspiration   |
| MTC           | Medullary thyroid cancer |
| PTC           | Papillary thyroid cancer |



<sup>a</sup>CEA is also expressed in MTC, but not in other primary thyroid cancers, so CEA testing may be useful if calcitonin-negative MTC is suspected. Results should be interpreted with care, as elevated CEA is associated with other malignancies, and coexisting CEA-expressing tumors and metastases should be ruled out, especially in cases of otherwise undetectable residual disease.

**References**

- Gharib H, Papini E, Garber JR, et al. American Association of Clinical Endocrinologists, American College of Endocrinology, and Associazione Medici Endocrinologi medical guidelines for clinical practice for the diagnosis and management of thyroid nodules—2016 update. *Endocr Pract.* 2016;22(5):622-39. PubMed
- Haugen BR, Alexander EK, Bible KC, et al. American Thyroid Association management guidelines for adult patients with thyroid nodules and differentiated thyroid cancer. *Thyroid.* 2016; 26(1): 1-133. PubMed
- NCCN Clinical Practice Guidelines in Oncology, Thyroid carcinoma. National Comprehensive Cancer Network. Fort Washington, PA. V2.2019 [Updated: Sept 2019; Accessed: Jun 2020]