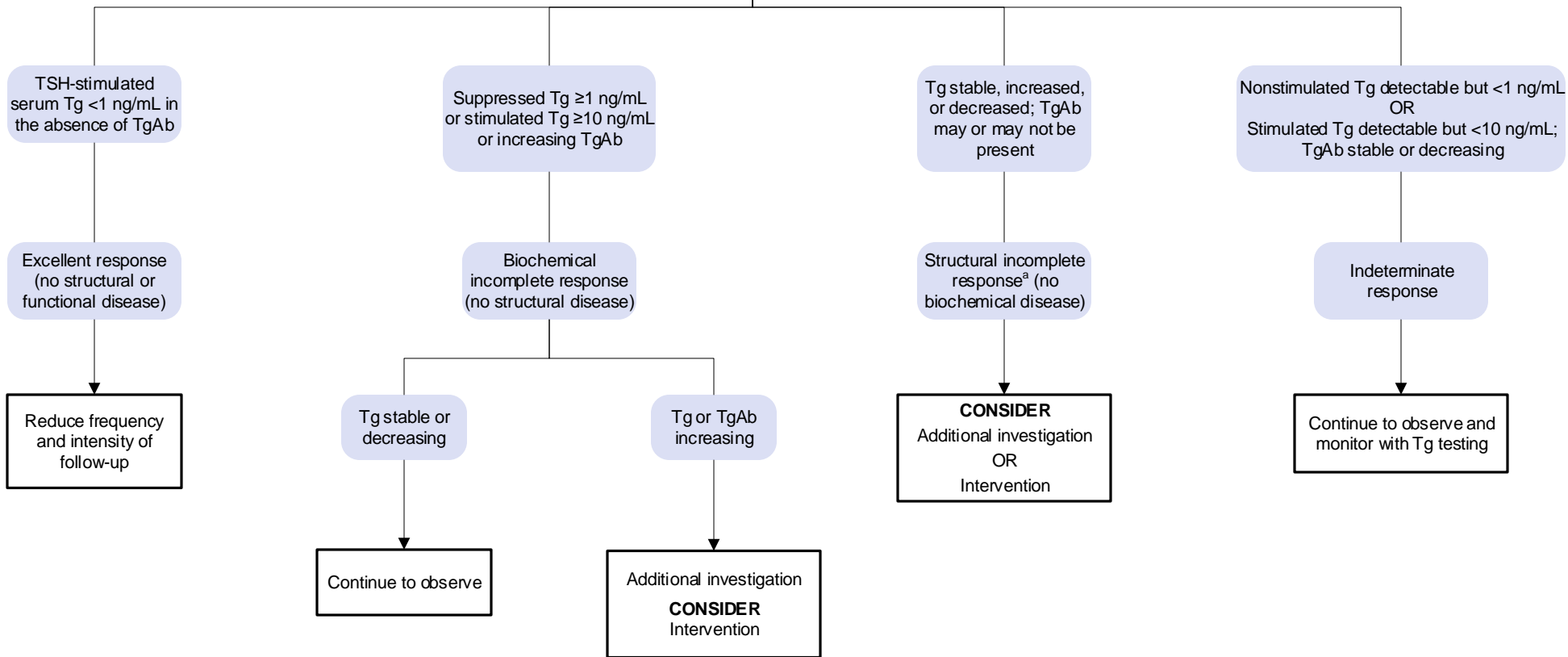


Abbreviations
 Tg Thyroglobulin
 TgAb Thyroglobulin antibody
 TSH Thyroid-stimulating hormone

INDICATIONS FOR TESTING
 Thyroid cancer treated with total thyroidectomy and radioactive iodine ablation

ORDER
[Thyroglobulin, Serum or Plasma with Reflex to LC-MS/MS or CIA](#)
 AND
[Thyroglobulin Antibody](#)



^aEvidence of disease observed on imaging.

Reference
 Filetti S, Durante C, Hartl D, et al. ESMO clinical practice guidelines for diagnosis, treatment and follow-up†. Ann Oncol. 2019;30(12):1856–1883. Pub Med