

Thyroid Disease Testing

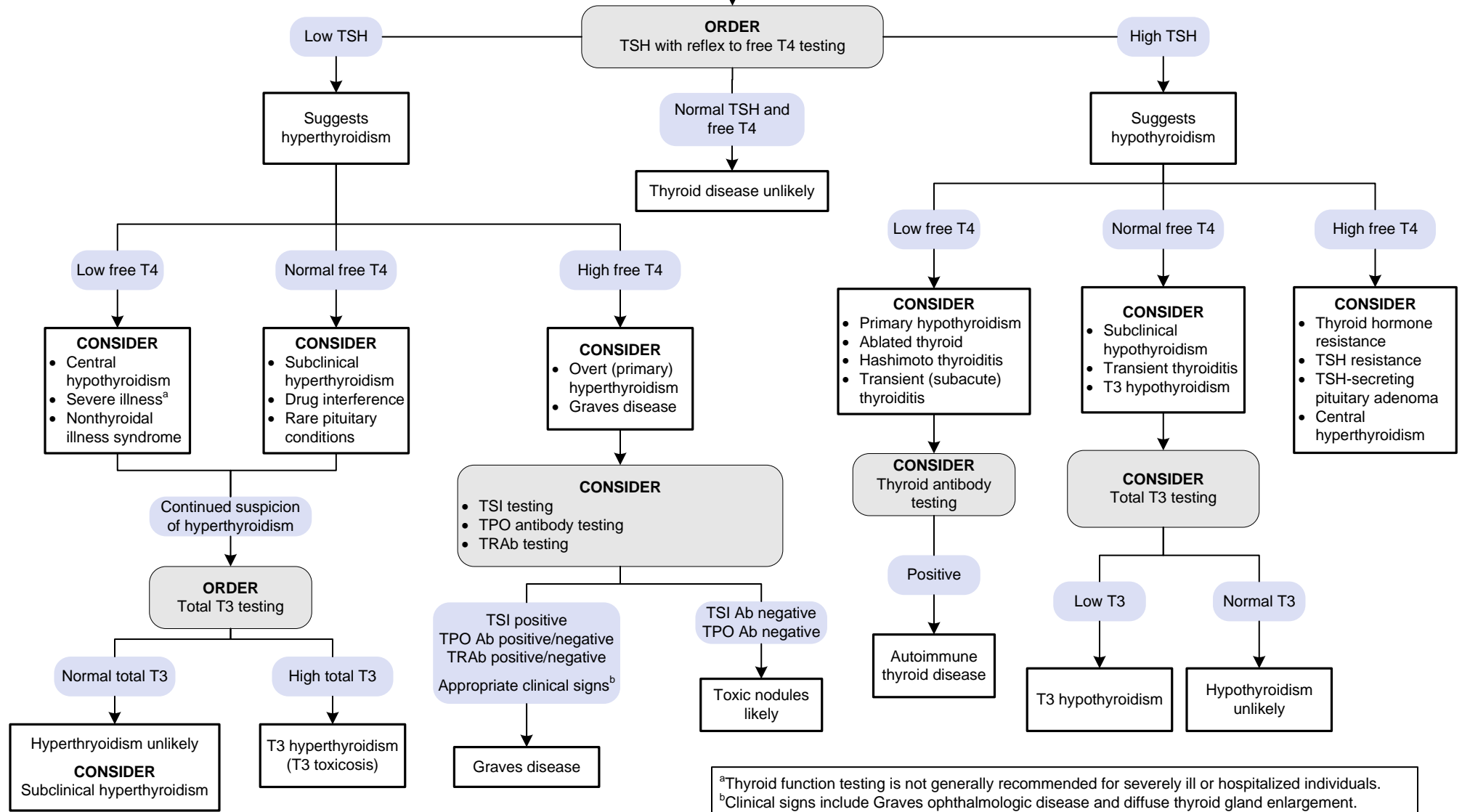
[Click here for topics associated with this algorithm](#)

Abbreviations

Ab	Antibody
T3	Triiodothyronine
T4	Thyroxine
TPO	Thyroid peroxidase
TRAb	Thyroid-stimulating hormone receptor antibody
TSH	Thyroid-stimulating hormone
TSI	Thyroid-stimulating immunoglobulin

INDICATIONS FOR TESTING

- Signs or symptoms of thyroid disease (eg, heat or cold intolerance, unexplained weight loss or gain, depression)
- Goiter on physical exam
- Age >60 yrs (screening indicated)
- Increased risk of hypothyroidism, eg, family history of thyroid disease, head or neck irradiation (aggressive case finding should be considered)



^aThyroid function testing is not generally recommended for severely ill or hospitalized individuals.
^bClinical signs include Graves ophthalmologic disease and diffuse thyroid gland enlargement.