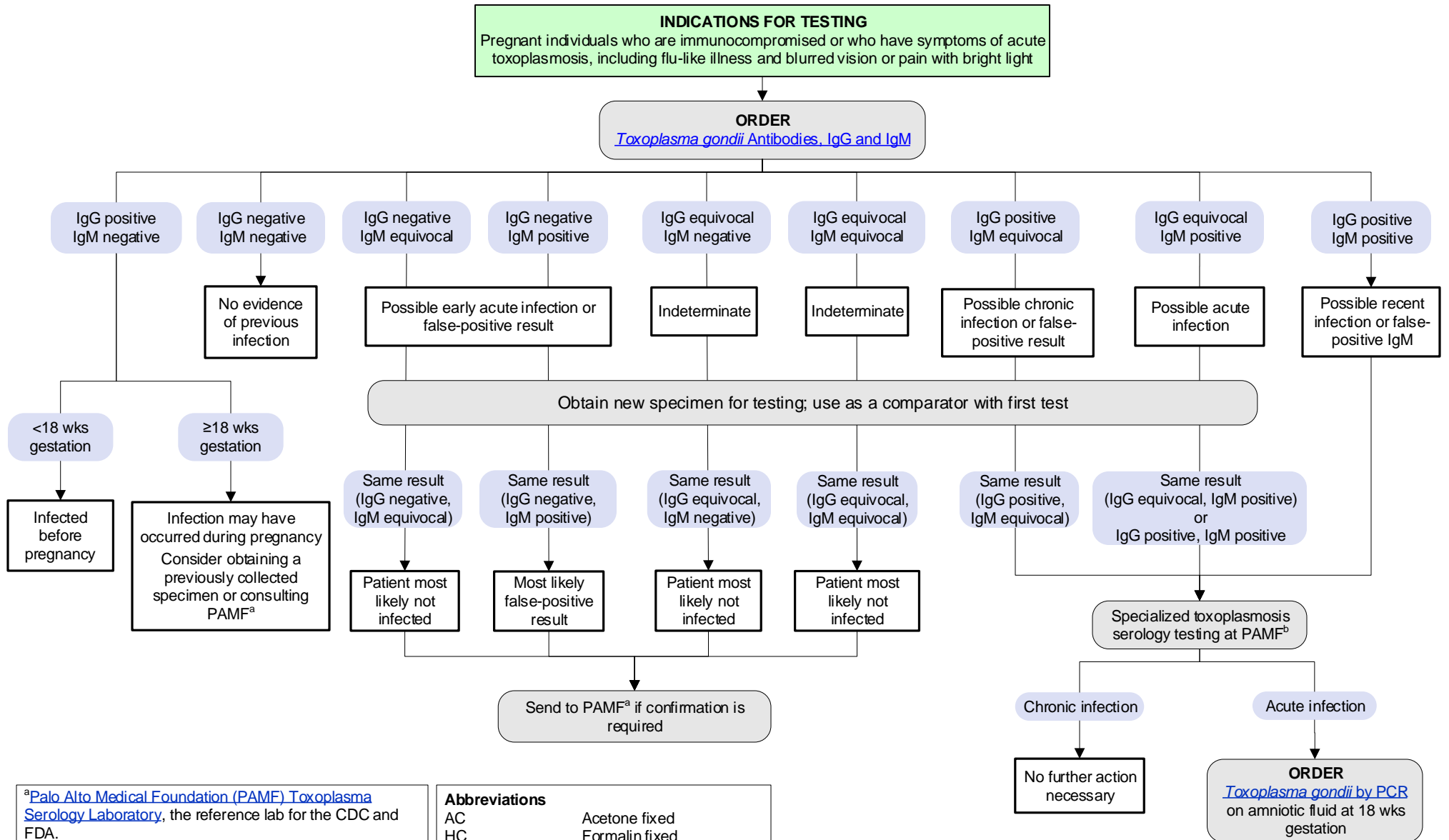


[Click here for topics associated with this algorithm](#)



<sup>a</sup>[Palo Alto Medical Foundation \(PAMF\) Toxoplasma Serology Laboratory](#), the reference lab for the CDC and FDA.

<sup>b</sup>Available at PAMF Toxoplasma Serology Laboratory; may include IgG dye testing, agglutination testing (AC/HS), and IgG avidity testing.

**Abbreviations**

AC	Acetone fixed
HC	Formalin fixed
IgG	Immunoglobulin G
IgM	Immunoglobulin M
PCR	Polymerase chain reaction

**References**

Montoya JG, Remington JS. Management of *Toxoplasma gondii* infection during pregnancy. Clin Infect Dis. 2008 15;47(4):554-566.  
 U.S. Department of Health and Human Services, Centers for Disease Control and Prevention. DPDx - Laboratory identification of parasites of public health concern: toxoplasmosis [Last updated: Nov 2020; Accessed: Jun 2021]