

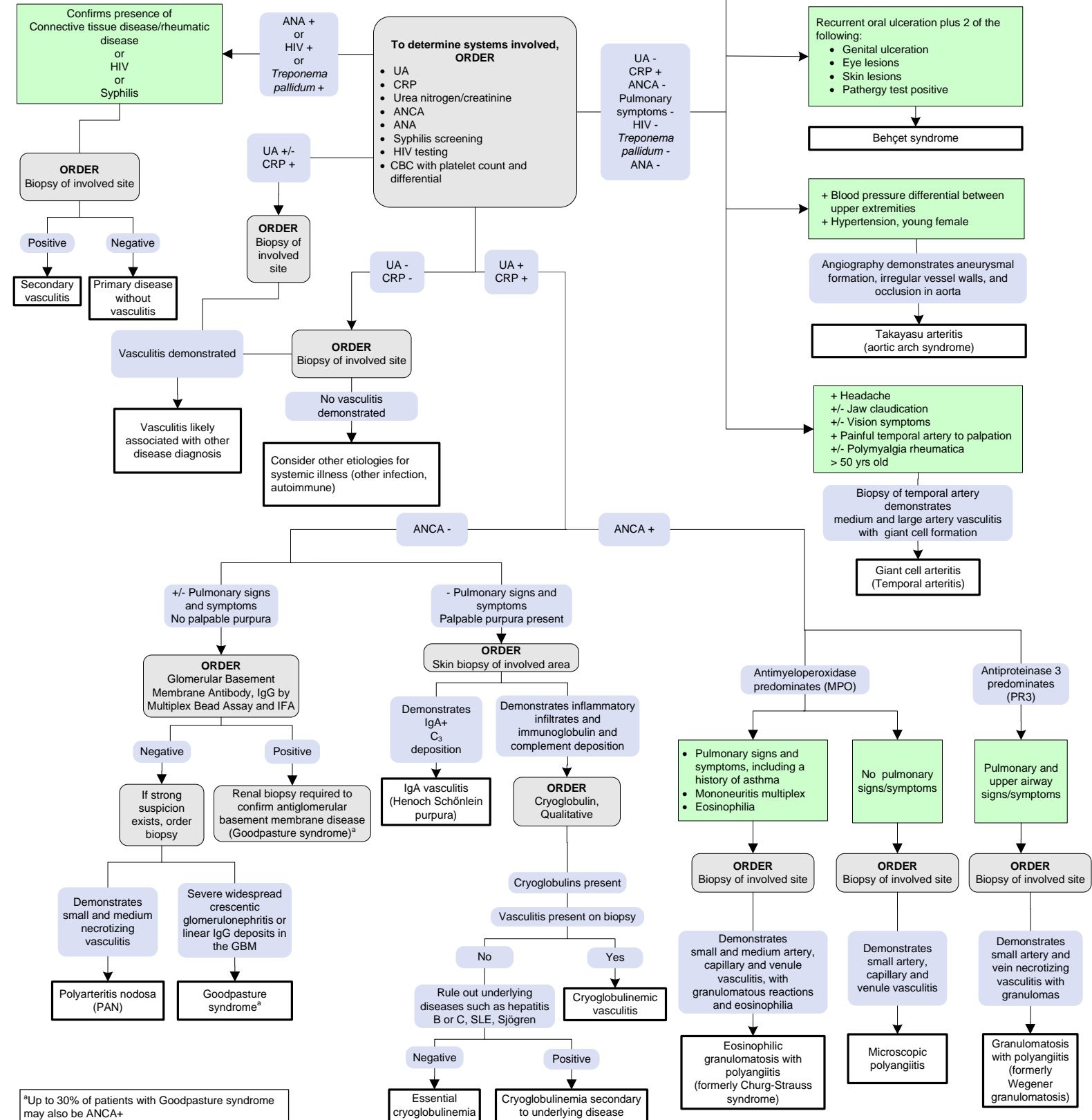
Abbreviations	
ANA	Anti-Nuclear Antibody
ANCA	Anti-Neutrophil Cytoplasmic Antibodies
CRP	C-Reactive Protein
MPO	Antimyeloperoxidase
PR3	Antiproteinase 3
UA	Urinalysis

**INDICATIONS FOR TESTING**  
 Unexplained systemic illness with organ involvement including ≥1 of the following

- Upper airway (chronic rhinosinusitis)
- Renal (microscopic hematuria or glomerulonephritis)
- Pulmonary (pulmonary infiltrates, dyspnea, cough, hemoptysis)
- Dermatologic (palpable purpura, urticaria)
- Neurologic (mononeuritis multiplex)

**Must rule out infection, neoplasm, drug effect**

NOTE: Classification is primarily based on predominant vessels involved.



<sup>a</sup>Up to 30% of patients with Goodpasture syndrome may also be ANCA+